

NEW SEASON
EXCLUSIVE NEWS INSIDE

SUN INTERVIEWED
BOONE: BACK FROM THE DEAD

LOST™

THE MAGAZINE



LAUNCH SPECIAL!

SEASON 3 IS HERE!

- EXCLUSIVE J.J. ABRAMS INTERVIEW
- DAMON LINDELOF ANSWERS YOUR QUESTIONS
- SURVIVORS CHARACTER CATCH-UP GUIDE

THE FUSELAGE
FANS' LATEST LOST THEORIES

GIANT FOOT STATUE
EXCLUSIVE 'MAKING OF' INSIDE

ISSUE #7 NOVEMBER/DECEMBER 2006



© 2006 Twentieth Century Fox Television. All Rights Reserved.

OCEANIC 815

14 WHERE ARE THEY NOW?

Season three is finally here, but what predicaments did last season's cliffhanger leave everyone in? Our Oceanic section is here to help...

BY THE FIRE

37 YUNJIN KIM

Sun plotted to leave her husband, Jin, and in season two she's shocked to discover she is pregnant. Yunjin Kim ponders her character's future...

47 IAN SOMERHALDER

The former *Lost* actor discusses his new horror film *Pulse*, and looks back at the role Boone played among the survivors of Flight 815...

54 FREDRIC LANE

The US Marshal, Edward Mars, may not have survived long after the crash, but he has continued to crop up in Kate's flashback...

THE OTHERS

28 J.J. ABRAMS

Lost's Co-Creator/Executive Producer talks about the power of the second season, and looks ahead to the shocks in store this year.

57 DAMON LINDELOF'S PEARLS OF WISDOM

Lost's other Co-Creator/Executive Producer, Damon Lindelof, takes on eight fan questions from the heart of The Pearl station...

NAMASTE

44 THE ORIENTATION FILM

Our new regular section examines the world of The Dharma Initiative. We begin with a transcript of the first words we ever heard from Dr. Marvin Candle...



EXCLUSIVE POSTERS

You won't find these pin-ups anywhere else: on one side, the enigmatic Others, and on the other, we commemorate the love between Hurley and Libby...



CONTRIBUTORS:
WORDS: Tara DiLullo, Bryan Cairns, Kate Lloyd
LOST EPISODIC AND BEHIND-THE-SCENES PHOTOS: Mario Perez

VERY SPECIAL THANKS TO:
J.J. Abrams, Damon Lindelof, Bryan Burk, Carlton Cuse, Samantha Thomas, Melissa Harling, Bruce Gersh, Gregg Nations, everyone at ABC for their time and support. Yunjin Kim, Ian Somerhalder, Fredric Lane, Mike Swift, Mario Perez, Jim Van Houten, all of the cast's agents, managers and publicists, everyone at Channel 4 in the UK, and absolutely everyone that makes up 'Team Lost' for their hospitality, kindness, and assistance in creating each issue of *Lost: The Official Magazine*.

TITAN MAGAZINES
Production Assistant
Reprographic Operator
Production Creative Operator
Production Supervisor
Production Controller
Art Director
Studio Manager
Circulation Assistant
Circulation Executive
Circulation Manager
Marketing Assistant

Den Patrick
Robert Moss
Elena Kanaouris
Jackie Flook
Bob Kelly
Oz Browne
Marcus Scudamore
Filiz Tumburi
Steve Tothill
William Pearson
Dean Allen
Beth Alexander



contents

abc abc.com thefuselage.com

DARK TERRITORY

50 SOMETHING'S AFOOT

Lost's Sculptor Jim Van Houten presents a series of exclusive concept art and designs that went on to become the island's mysterious giant foot...

BEYOND THE HATCH

58 THE KATE ESCAPE

Kate may be currently captured by the Others, but *Beyond The Hatch* celebrates her heroic season two adventure up into the air ducts of *The Swan*...

FREQUENT FLYERS

06 NEW TRANSMISSIONS

Exclusive season three news straight from the Writers' Room, plus a whole myriad of other *Lost* news awaits your keen eyes and ears...

12 VOICES FROM THE FUSELAGE

Paddle down river to pick up the strongest transceiver signal and analyze the fans' theories, views and debates, and then send in yours, too...

63 DEAR DIARY

Ian Somerhalder revisits the island to tell us about a particularly memorable and challenging day filming *Lost*...

64 BLACK BOX FLIGHT RECORDER

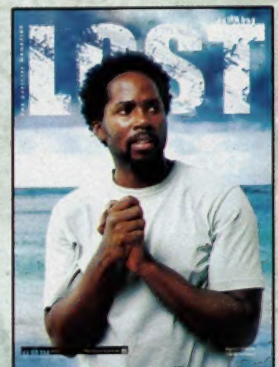
Many of the survivors have experienced visions on the island. Let's go way, way back to when Jack's dead father appeared to him...

66 EXODUS

Lost Magazine #8 means one thing – we've struck the next of the cursed numbers...

4 8 15 16 23 42

COLLECTOR'S SPECIAL



If you are missing Michael, don't worry – *Lost Magazine* has the cure. Make sure your local specialist comic store orders you and your friends copies of this rare variant cover collector's version of this issue...

www.expressmag.com
www.titanmagazines.com

Marketing Executive
PR & Promotions Officer
Assistant Marketing Manager
Marketing Manager
Advertising Executive
Advertising Manager
Managing Editors

Publishing Director
Operations Director
Executive Director
Publisher

Tracey Devlin
Ross Allen
Jo Browne
Anne Marie McBride
Joel Codling
James Willmott
Brian J. Robb
Darryl Curtis
Chris Teather
Leigh Baulch
Vivian Cheung
Nick Landau

DISTRIBUTION
US Newsstand Distribution

US Distribution

UK Newsstand
Account Manager:
Canadian Distributors:
Australia/New Zealand Distributors
UK/US Direct Sales Market
Subscriptions

Total Publisher Services, Inc.
John Dzielatowski
630-851-7683
Source Interlink
Curtis Circulation Company
Comag, +44 (0)1895 433600
Peter Hilton
Kable Distribution Services
Gordon & Gotch
Diamond Comic Distributors
US: (1-877)-363-1310
www.expressmag.com
UK: 0870 428 8221
lost@galleon.co.uk

For information on advertising, contact
adinfo@titanemail.com
or call +44 20 7620 0200
www.titanmagazines.com

Lost: The Official Magazine Volume #01, In-flight Magazine #07, November/December 2006. *Lost: The Official Magazine* is published every two months by Titan Magazines, a division of Titan Publishing Group Ltd, 144 Southwark Street, London, SE1 0UP. TM & © Touchstone Television. All Rights Reserved. Titan Authorized User. ISSN# 1740-3626 TM# 8693.

New Transmissions

News from the *Lost* world and beyond...

UNEARTHED TREASURES



New season. New friends. *Lost Magazine* is very excited to announce that *Lost* Supervising Producers/Writers **ADAM HOROWITZ** & **EDWARD KITSIS** will be joining us in our New Transmissions zone to bring you exclusive development news direct from the Writers' Room. Need some season three treasures unearthed? Read on...

Words: Paul Terry

Hey guys! Welcome to *Lost Magazine*! How has your summer been, and what do you think the magazine's coverage of the first year?

Edward Kitsis: Our summer's been great. We've been plowing full speed ahead on season three and are really excited about the direction the show's taking.

Adam Horowitz: As for the magazine, it's amazing the breadth and depth of coverage you guys manage. You seem to know more about the show than we do!

How did your friends/family react to season two's cliffhanger? What kind of questions have you been plagued with over the summer?

AH: That would be assuming we have friends.
EK: Everyone wants to know about Desmond's fate and just what the hell's going on off the island... with Penny and those two guys in that cold, cold place.

AH: Other questions we've been asked usually include: Are Locke and Eko okay? Where did the Others take Jack/Kate/Sawyer? Who will take care of Vincent?

EK: ...And when are we going to meet Neil Frogurt.

OK, season three is almost upon us... what themes will the show be exploring this season?

EK: I think a lot of the themes we've explored in previous seasons such as science vs. faith and redemption will continue to be explored in hopefully new and interesting ways.

AH: As well as us continuing to explore our amazing cast of characters.

EK: Now that the audience has grown to know them, we are able to explore deeper areas of their lives in ways we couldn't previously.

AH: As for new themes. Why would we want to ruin the surprise?

What changes in the format/style of the show will be employed?

EK: The show will be filmed before a live studio audience.

AH: Eddy's kidding. That's not possible given our sets and locations. But we are considering a laugh track.

EK: In all seriousness, the format will most likely remain similar to what the first two seasons brought – flashbacks and Island stories remain the backbone of each episode.

AH: However, as we did in season two with *The Other 48 Days*, *Maternity Leave*, and *Three Minutes* – where we shook things up a bit by mixing in episodes that were entirely island based or involved flashbacks to events on the island – we hope to surprise the audience with some new wrinkles this year as well.

EK: But of course, we can't really give away any of that right now. Just know that the writers are working tirelessly to try to find new ways to surprise the audience.





You guys are a writing pair. So, with the themes of duos, what duos on *Lost* do you dig, and what developments/challenges would you like to see those duos experience?

EK: We've always enjoyed writing for Claire and Charlie. At the end of last season they shared their first kiss –

AH: – with each other.

EK: Right. We assume both have kissed others in the past. But moving past my partner's literal-minded sense of humor, we'd like to see just what that kiss meant and where it takes them as a duo.

AH: And I'd like to take the duo theme one step further and say that there is a trio that intrigues us: Jack, Kate, Sawyer. All three have been taken by the Others. How will that affect the dynamic between them? Could be interesting...

Fans are rabid about the return of the 'monster,' the whispers, etc. How will season three get fans closer to the truths behind these elusive aspects of the show?

EK: By watching!

AH: If you're expecting us to explain anything about the 'monster,' whispers, etc. here, you should know that we value our jobs.

EK: And are well aware that Damon, Carlton and J.J. read this magazine!

What have you enjoyed most about planning out this season, and how would you sum up/tease the fans about what year three has in store for the viewers?

AH: Truly what we have enjoyed most is the day-to-day process of writing this show. We are incredibly fortunate to come to work every day with the most talented, intelligent and gifted writers in the business.

EK: The one thing we can say to tease the fans is this: if season two was about finding out what was in the hatch, then season three is about finding out who the Others are. ☠



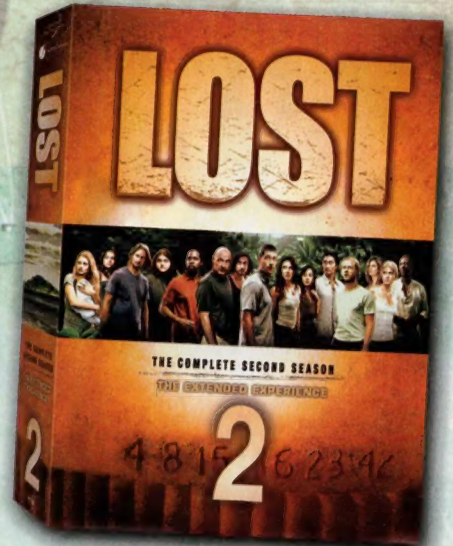
MORE TRANSMISSIONS OVERLEAF ➔

New Transmissions

News from the *Lost* world and beyond...



EXTEND THE SEASON TWO EXPERIENCE



Your DVD player is in for a treat... *Lost: The Complete Second Season – The Extended Experience* has arrived! Being a ridiculously comprehensive and features-packed box set, we've decided to devote this section of New Transmissions to an investigation into how the whole thing was put together. DVD Producer **JOHN BERNSTEIN** tells us everything... **Words: Paul Terry**

What did you like the most about this second season of *Lost*?

I wish that I was eloquent enough to be able to articulate everything that was great about season two in just a few sentences. At its core, it continued to be a journey... in both a literal sense, and also a metaphoric one. Yes, I certainly loved the addition of the Tailies and the Others, the new sets, and the evolution of the mythology... that was all great fodder for the DVD. However, what was most engaging each episode was the evolution of the characters and their relationships. As unique and seemingly extraordinary as their individual tales were, most of us could still relate to the complexity of those relationships in some way. Also, I know I've said it before, but I still think what I like the most about *Lost* is that it never panders or talks down to

the audience, unlike the majority of what is out there on TV. It assumes that we collectively have a brain, and again, engages us with storytelling that continually pushes the envelope. That's refreshing.

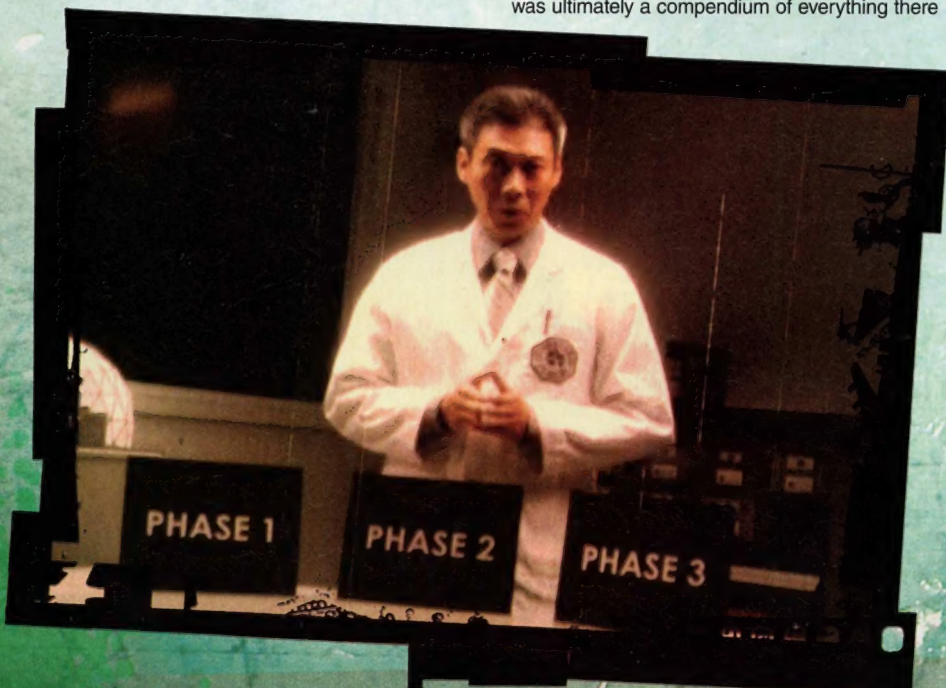
Did you approach how you put together this DVD set any differently than season one?

Absolutely. During the first season we were exploring new territory. We started documenting the show from day one... even before there was a script or any actors cast. At that point, we weren't sure exactly where we were going, or how the audience would respond. The goal was just to make sure we recorded it all... from the genesis of the idea and putting the creative teams together, to developing the characters, and ultimately, charting the show's initial success. The season one DVD was ultimately a compendium of everything there

was to know about the birth of this intriguing, new series. The second time around, our mission was a bit different. Fans have connected to the show for a variety of reasons... adventure, mythology, intriguing flashbacks, exotic locations, and of course, there are people out there who watch because they love the actors, or perhaps they want to see what will happen with the love triangle. With that in mind, this time the challenge was not only to cover production and have exclusive access behind-the-scenes, but also to satisfy as many of those varied expectations as possible – all in one cohesive experience. After all, it's all part of the world of *Lost*.

Could you give us a run-down of the bonus material please?

Once again, we went a little crazy and created so many special features that we needed to add a seventh disc. We have brought back **Lost: On Location** this season, and take a look at the making of 10 episodes. For those who want a more in-depth look at the production of the show, there's **Fire + Water: Anatomy of an Episode**, a half-hour documentary that begins in the Writers' Room at *Lost*'s office at Disney Studios, follows the shooting in Hawaii, and finally covers the post process back in Burbank. **Mysteries, Theories & Conspiracies** is a discussion about what might really be happening on the island. Then, the design, development, and significance of season two's iconic set is explored in **Secrets From The Hatch**. Then, there is **Lost: Connections**. There has been a ton of speculation on all the past seemingly-



coincidental connections between the survivors. We created this complex, interactive environment to officially set the record straight, and have even thrown in a few unexpected surprises. Of course, the DVD package also includes more **Flashbacks**, **Deleted Scenes**, **Bloopers** from the set, and a variety of **Audio Commentaries with cast and crew**.

What's your favorite bonus feature in this set?

It's hard to pick a favorite, but admittedly, I am partial to a few features. First, there is **The World According to Sawyer**. You gotta love any piece that gives you a rapid-fire barrage of Sawyer saying, "Dr. Giggles, Sugarpop, Mr. Clean, Deepdish, Short-round, Chewie and Sweetcheeks." We had a blast reliving those funny and frequently-offensive nicknames with the cast and crew. Hopefully, everyone will agree that the results are pretty darn entertaining. We were also thrilled to be able to include the visually-striking **Channel 4 UK Promo**, directed by famous photographer and director, David LaChapelle. Finally, we created a unique interface for disc seven that we think is cool. The goal was to make it more than just a menu. We wanted to draw fans in with an interactive experience that would be quintessential season two. For those who haven't seen it yet, I don't want to spoil it, but let's say it involves Dharma.

What themes would you personally like to see *Lost* explore in season three?

Well, I'll leave that to Damon [Lindelof], Carlton [Cuse], J.J. [Abrams], Bryan [Burk], Jeff [Pinkner], Jack [Bender] and the rest of their talented writing staff. Based on what I already know about the upcoming season, all I'll say is that they are going to give us plenty to work with for next year's DVD set.



Finally, any surprises/Easter eggs you can share?

Hmm... I suppose there is no harm giving a couple of hints... I won't say for sure, but there just might be a mini-documentary about the making of the Dharma cookies. There also could be an exclusive interview with Evangeline Lilly on the beach... perhaps.

I wouldn't be surprised if there are actually more Easter eggs buried throughout the season two DVDs than there were in the season one set. Where are they hidden? How many should you look for? I am not allowed to reveal those specifics. Let's just say there could be 4, 8, 15, or as many as 23 total Easter eggs hidden. Happy hunting...

LOST'S NEW BREED



Video clip website YouTube.com sees fans of *Lost* and rock band Breed 77 unite...

The video clip website YouTube.com is fast becoming the latest online phenomenon, and it has been an interesting place for *Lost* of late. It turns out that a large proportion of *Lost* fans also love Gibraltarian rock group Breed 77. This crossover appeal has led to one fan called 'Artemisia' creating their own fan music video honoring Sawyer's antics so far.

The video energetically cuts between various scenes of Sawyer's first season dramas, and is cut to the Breed 77's explosive song 'La Ultima Hora', taken from the band's critically acclaimed 2004

album *Cultura*. The sequences of Sawyer – including his face-off with a polar bear and several emotionally-charged scenes with Kate – are edited with precision to the song's pounding riffs and tribal rhythms. With these editing talents, a future in music video editing could be beckoning Artemisia. So far, the Sawyer/'La Ultima Hora' video clip has had a massive 2,500 plays.

Check the very impressive video clip at: www.youtube.com/watch?v=R3YoyQZaSz0 The band's latest album, *In My Blood*, is out now from Albert Productions. Check out www.breed77.net

LOST MAGAZINE ON THE RADIO

The UK's Channel 4 website unites with *Lost: The Official Magazine* for weekly hit podcast called UK *Lost*...

During the season two run of *Lost* in the UK, Channel 4 – the TV station that is the UK home of the island saga – created a free, weekly, 40-minute downloadable discussion show called UK *Lost*. Locked away in a long deserted vault, broadcaster and presenter Iain Lee (co-host of cult hit Channel 4 show *The 11 O'Clock Show*) and a legion of devout *Lost* guests analyzed each episode every week. *Lost Magazine* Editor Paul Terry joined Iain Lee down the hatch from half-way through season two's run – for episode #11, *The Hunting Party's* analysis – and stayed as a regular guest/commentator for the rest of the season.

Each week – tying in with the episode that aired on Channel 4 – Iain, Paul, and a string of different guests analyzed the episode's content, debating conspiracies, secrets, and mysteries of the show. Along with exclusive competitions, interviews with the cast and crew and a guide to



the online *Lost* Experience. UK *Lost* featured theories that fans had emailed into the show.

During the run of UK *Lost*, the show became available via iTunes and rocketed up the charts, reaching as high as number 16 in the Podcast chart. Although season two has completed its broadcast on Channel 4 (with the finale airing in October), you can download the entire back catalogue of UK *Lost* season two podcasts for free from the website below. The UK *Lost* team hope to return in time for when season three arrives on Channel 4 in early 2007. www.channel4.com/radio

Voices from the fuselage

THE FANS... THE THEORIES... THE VIEWS... THE DEBATES...



MASTER RACE



To add to the long list of theories, I'm going to take a shot at telling you one of my many theories. It's kind of a mix of a lot of ideas. Of course the Hanso Foundation and the Others are testing the survivors, but I think every single person on the island is being tested by the island *itself*. Everyone has a chance to relive his or her lives and make it better. They're all faced with things from pre-crash times that come back to test them *post*-crash. Charlie – heiroin, Jack – dad, etc... If they pass the test, they die (go on to a better place). But this isn't purgatory. I don't really know what it is. This would explain the black smoke – it's the islands' spirit. It sees all – that's where the images in it come from. So maybe the Others test is to test the survivors. My theory might not be 100 per cent right, but there might be some truth to it.

I also have an idea about what the 'monster' means. It reflects everyone's pre-and-post island faults: Money; Obsession; Narcotics; Secrets; Theft; Execution; Revenge. I know this actually has nothing to do with *Lost*, but the song 'At The Bottom Of Everything' (from Bright Eyes' album *I'm Wide Awake, It's Morning*) fits right along with the show. It's pretty freaky and a little too coincidental.

Stephanie Weidman Indianapolis, Indiana, US

Got something you want to say about *Lost*? Then we want to hear it.
Email: voices@titanemail.com
or transceiver@titanemail.com

Please note: No attachments of any kind please.
We cannot send personal replies, nor send on your letters to any of the cast or crew at *Lost*.

CONTROLLED EXPERIMENT

I think that the Others are really Dharma Initiative employees, because it would explain why Tom and Ethan were in the Staff, how they have guns, the boat, the costumes, why they took Michael's blood, why they take people, and why they make them take tests. And I know what the Others do with the people they take. First of all, Goodwin said that they only take the strong, athletic, and good people. Second, in the Pearl Orientation Video they showed some people exercising. I think the people they take are "the replacements" for some of their experiments.

John Vargas, via email



LOST IN SPACE

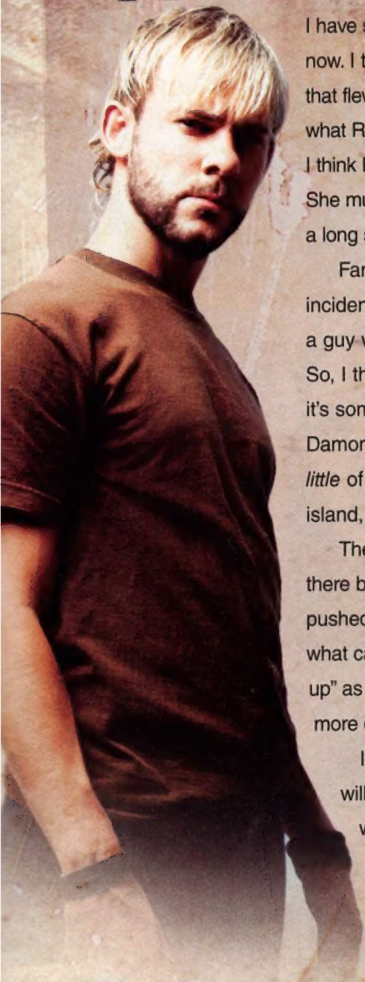
I have two theories about *Lost*. My first theory is that Henry Gale is Alvar Hanso. Think about it, he has the same shaped head found on www.hansofoundation.org, he has the pointy nose and an evil motive.

My second is that the plane was dragged into a space time pocket. The electromagnetism dragged the plane so far into space, that they traveled into time to the point where the Dharma Initiative launched some kind of accidental nuclear apocalypse. The Others are actually mutated scientists. Penny is in some alternate dimension looking for the Dharma Initiative.

Logan Kohlhagen, Wisconsin



THE 'OTHER' SIDE OF THE ISLAND



I have several theories concerning the *Lost* world as of right now. I think the 'monster' was the weird green bird that flew over Hurley in the finale. I think the black smoke is what Rousseau says it is, an alarm to protect the island. Also, I think Rousseau is sick and her team is actually the Others. She must be sick and not be able to remember them. It's a long shot, but nothing is ever normal on *Lost*.

Fans have been talking about how after the hatch incident, Charlie acted very strangely. He's always been a guy who jokes around, especially to win Claire's heart. So, I think he's normal. Also, about the Arctic thing, I think it's something to do with another place on the island. Damon Lindelof said that the survivors have explored *very little* of the island, so I think that is another station on the island, perhaps where the Polar Bears came from.

The Black Rock and its location? I think it was blown there by a typhoon. I also think that when the button is not pushed, it causes the electromagnetic field to fail and that's what caused the plane to crash. Since the hatch has "blown up" as some people say, I think there will be more and more crashes since the electromagnetic field is destroyed.

I also believe Locke and Eko are dead, but Desmond will somehow survive since when he turned the key he was underground. The blast of the hatch will see to new caves and various escapes Desmond could have used.

Gary, USA

FATHERLAND

Penelope's father is the leader/director/whatever of the Hanso Foundation. I think Penelope knows about the island and her father's connection with it, and is trying to expose the island because she knows that Desmond is there. Penelope's father wanted Desmond out of his daughter's life, and Desmond was also planning to sail around the world... what better place to send Desmond than the island? It's possible, I think, but I don't know how Penelope's father would make it so that Desmond ends up there.

Also, I think the computer in the hatch controlled a field, a dome, that made the island invisible and undetectable to the outside world. I think you had to put in the numbers every 108 minutes to keep the field going, regenerating it in a way, so it wouldn't stop working. I think Locke, Eko and Desmond survived the big white 'explosion'. I think the hatch is made of sustainable material which wasn't affected by the big white explosion, because really what happened was just a typical reaction. The reason the hatch door, with the word 'Quarantine' on it, blew off is because that part of the hatch isn't made of sustainable material.

Mark, Manchester, England

ATTACK OF THE CLONES

WOW... you have to love *Lost*! There are no boundaries, and that's why I've come up with some theories of what I believe is going on, on the island.

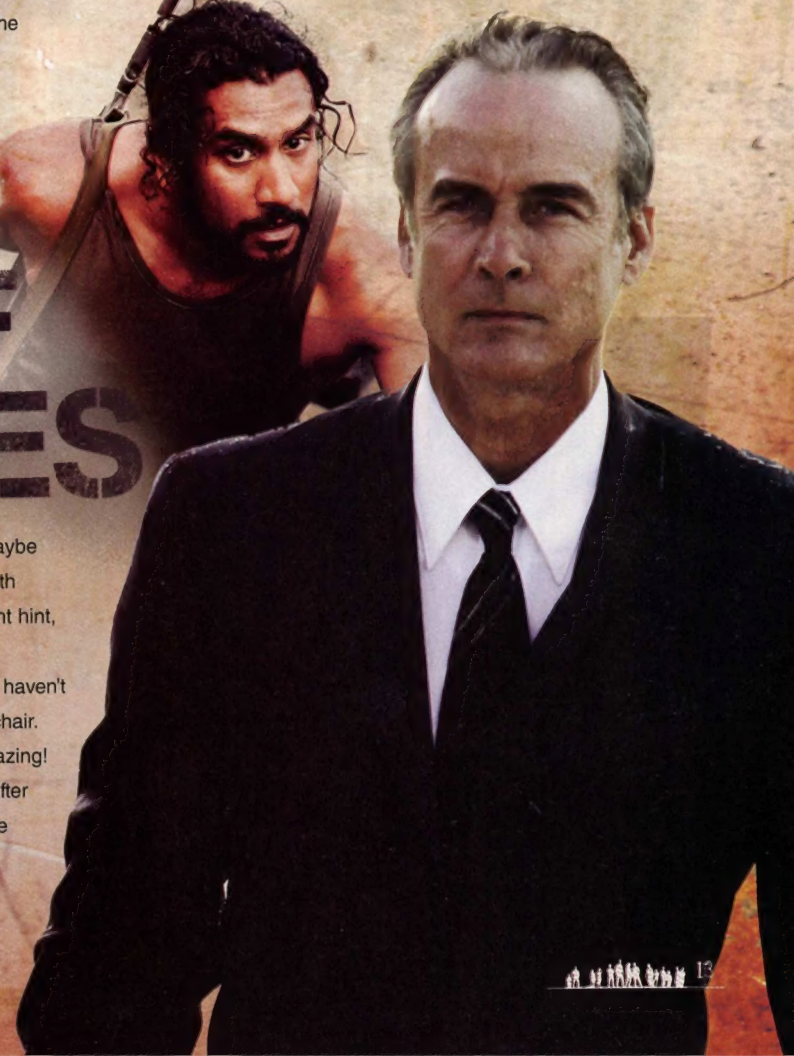
1. Cloning. As we saw in the finale of season one, there were two guys on the boat that looked like twins. Maybe clones? Also to add to this, the Others may have taken Christian's body and are cloning him.

2. Not too long ago a guy said maybe they are in a big dome. I agree with this now too after Desmond's slight hint, "Were stuck in a snow globe".

3. John Locke can't be dead – we haven't seen how he was put in a wheel chair.

Season two's ending was amazing! Glad to see Sayid back on form after Shannon's death. Can't wait to see what's in store for everyone...

Daniel Payne, Reading, UK





The Oceanic

Flight 815 (SYD - LAX)



WHERE ARE THEY NOW?

It's been a long summer. Now, with season three kicking and screaming onto our screens, we can at least begin to get some answers as to what happened to the islanders after that cliffhanger. To bring new viewers into the *Lost* world, and as a catch-up for current fans, here's what you need to know about the survivors of Oceanic Flight 815...

Words: Paul Terry





LOST



A HISTORY CHANNEL PRODUCTION

JACK

Name:

Jack Shephard

Played by:

Matthew Fox

Life before the crash:

Surgeon

Significant history:

Performed a somewhat miraculous spinal surgery on a woman, Sarah, whom he later married. However, Sarah ended up leaving him for another man

Strong alliances:

Kate

Weak alliances:

Sawyer, Locke, Mr. Eko

Last seen:

Bound and gagged on a pier, captured by the Others



KATE

Name:

Kate Austen

Played by:

Evangeline Lilly

Life before the crash:

Fugitive

Significant history:

Blew up her house, killing her stepdad (who she knew was really her biological father) whom she despised for the way he treated her mother. The man she will always call 'Dad' works in the military

Strong alliances:

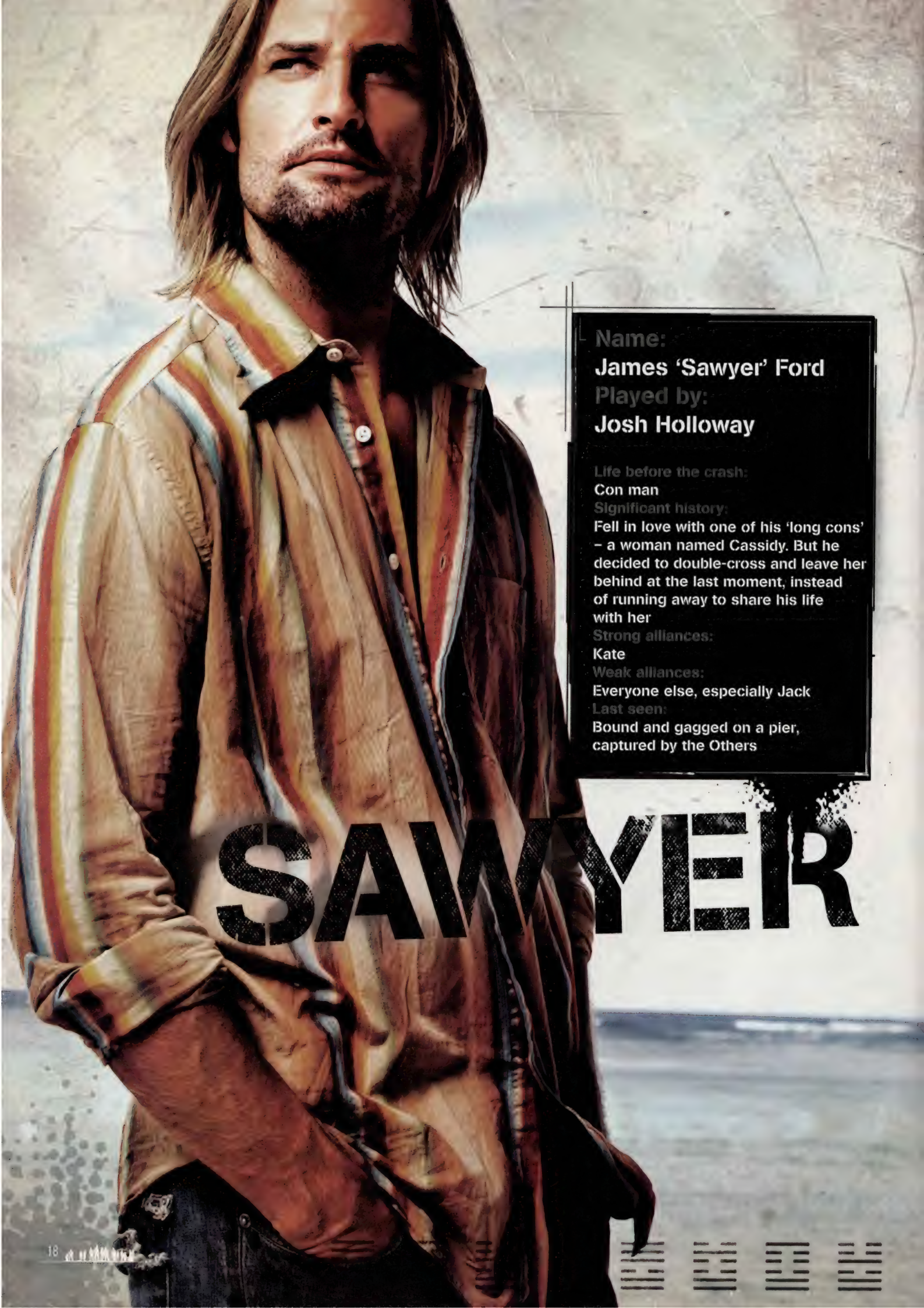
Jack, Sun, Claire, Sawyer

Weak alliances:

None to speak of

Last seen:

Bound and gagged on a pier, captured by the Others



Name:

James 'Sawyer' Ford

Played by:

Josh Holloway

Life before the crash:

Con man

Significant history:

Fell in love with one of his 'long cons' – a woman named Cassidy. But he decided to double-cross and leave her behind at the last moment, instead of running away to share his life with her

Strong alliances:

Kate

Weak alliances:

Everyone else, especially Jack

Last seen:

Bound and gagged on a pier, captured by the Others

SAWYER



HURLEY

Name:

Hugo 'Hurley' Reyes

Played by:

Jorge Garcia

Life before the crash:

Fast food employee turned lottery winner

Significant history:

After a deck collapsed that he was standing on (and four people died), Hugo became depressed and spent a significant amount of time in a mental institution, where he met a man, Leonard who was obsessed with repeating the numbers 4, 8, 15, 16, 23, 42

Strong alliances:

Everybody loves Hurley

Weak alliances:

...except Sawyer

Last seen:

Let go by the Others, Hurley was instructed to head back to his people, delivering the message that they should stay well away

CHARLIE

Name:

Charlie Pace

Played by:

Dominic Monaghan

Life before the crash:

Bass player for has-been rockers
Drive Shaft

Significant history:

His brother, Liam, sold Charlie's piano and used the money to head to Australia with his wife and newborn daughter in an attempt to shake his heroin addiction. On the island, Charlie has recently conquered his addiction and has formed a strong spiritual connection to Mr. Eko

Strong alliances:

Claire, Baby Aaron, Mr. Eko

Weak alliances:

Locke, Jack

Last seen:

Resting on the beach, sharing a kiss with Claire



CLAIRE & AARON

Name:

**Claire Littleton, and
baby Aaron Littleton**

Played by:

Emilie de Ravin

Life before the crash:

Fast food employee

Significant history:

Through regressive hypnosis, Claire was recently able to remember what happened to her when she was abducted by the Others. Her memories led her, Kate and Rousseau to an abandoned medical station where they learned the tattered appearance of the Others is merely a façade

Strong alliances:

Charlie, Locke, Kate

Weak alliances:

None to speak of

Last seen:

**Resting on the beach, sharing a kiss
with Charlie**



LOCKE

Name:

John Locke

Played by:

Terry O'Quinn

Life before the crash:

Collections manager at a box company, and owner of a home inspections office

Significant history:

His estranged father got in touch with him late in life, just to con Locke into donating him one of his kidneys. Before the crash, Locke was wheelchair-bound, but miraculously was able to walk afterwards

Strong alliances:

Desmond

Weak alliances:

Jack, Mr. Eko, Charlie

Last seen:

Panicking inside the Swan station - Locke had insisted the numbers didn't mean anything - but realized, too late, that they did. Once the code wasn't entered, the whole place began to implode. A deafening sonic boom and bright light then engulfed the sky

Name:

Mr. Eko

Played by:

Adewale Akinnuoye-Agbaje

Life before the crash:

War-lord and drug runner turned priest

Significant history:

Discovered that the plane that his priest brother Yemi accidentally ended up boarding (which Eko's gang had loaded up with heroin) had taken off from Nigeria... and crashed on the island. Eko also stood down the island's black smoke 'monster' - which Rousseau referred to as the 'security system'

Strong alliances:

Charlie

Weak alliances:


Locke

Last seen:

Panicking inside the Swan station - Locke had insisted they didn't type in the numbers, the result of which was the whole place began to implode. A deafening sonic boom and bright light then engulfed the sky

MIR. EKO





JIN & SUN

Name:

Jin and Sun Kwon

Played by:

Daniel Dae Kim and Yunjin Kim

Life before the crash:

'Special Assistant' to Sun's father, and homemaker

Significant history:

Sun was secretly learning to speak English back in their native Korea so she could leave Jin. She ended up deciding to stay with him, just before boarding the doomed Flight 815. Sun recently discovered she is pregnant... a miraculous event considering her husband Jin was diagnosed as sterile back in Korea

Strong alliances:

Bernard, Hurley, Kate

Weak alliances:

Sayid

Last seen:

On Desmond's boat with Sayid, out on the ocean, covering their ears from the sonic boom as the bright light swept across the sky

SAYID

Name:

Sayid Jarrah

Played by:

Naveen Andrews

Life before the crash:

Former member of the Iraqi Republican Guard

Significant history:

The man who captured Sayid during the first Gulf war and forced him to learn how to torture a fellow Iraqi, turned out to be Kelvin Inman - Desmond's partner during his time manning the Swan station. Sayid is unaware of this unbelievable connection he has to Desmond

Strong alliances:


Locke, Jin, Sun

Weak alliances:

Jack

Last seen:

On Desmond's boat with Jin and Sun, out on the ocean, covering their ears from the sonic boom as the bright light swept across the sky



ROSE & BERNARD

Name:

Rose Henderson and Bernard Nadler

Played by:

L. Scott Caldwell and Sam Anderson

Life before the crash:

Bernard was a dentist. Rose's occupation is currently unknown. The two were honeymooning in Australia

Significant history:

Bernard made a sizable donation to a faith healer in Australia's Outback, and took his wife, Rose, there to cure her from her terminal cancer. The healer explained how he harnesses magnetic energies in the Earth to heal, but that he could not help Rose. However, to ease Bernard's pain, Rose lied and said he had cured her. Then, after crashing on the island, Rose felt a change - her cancer was gone

Strong alliances:

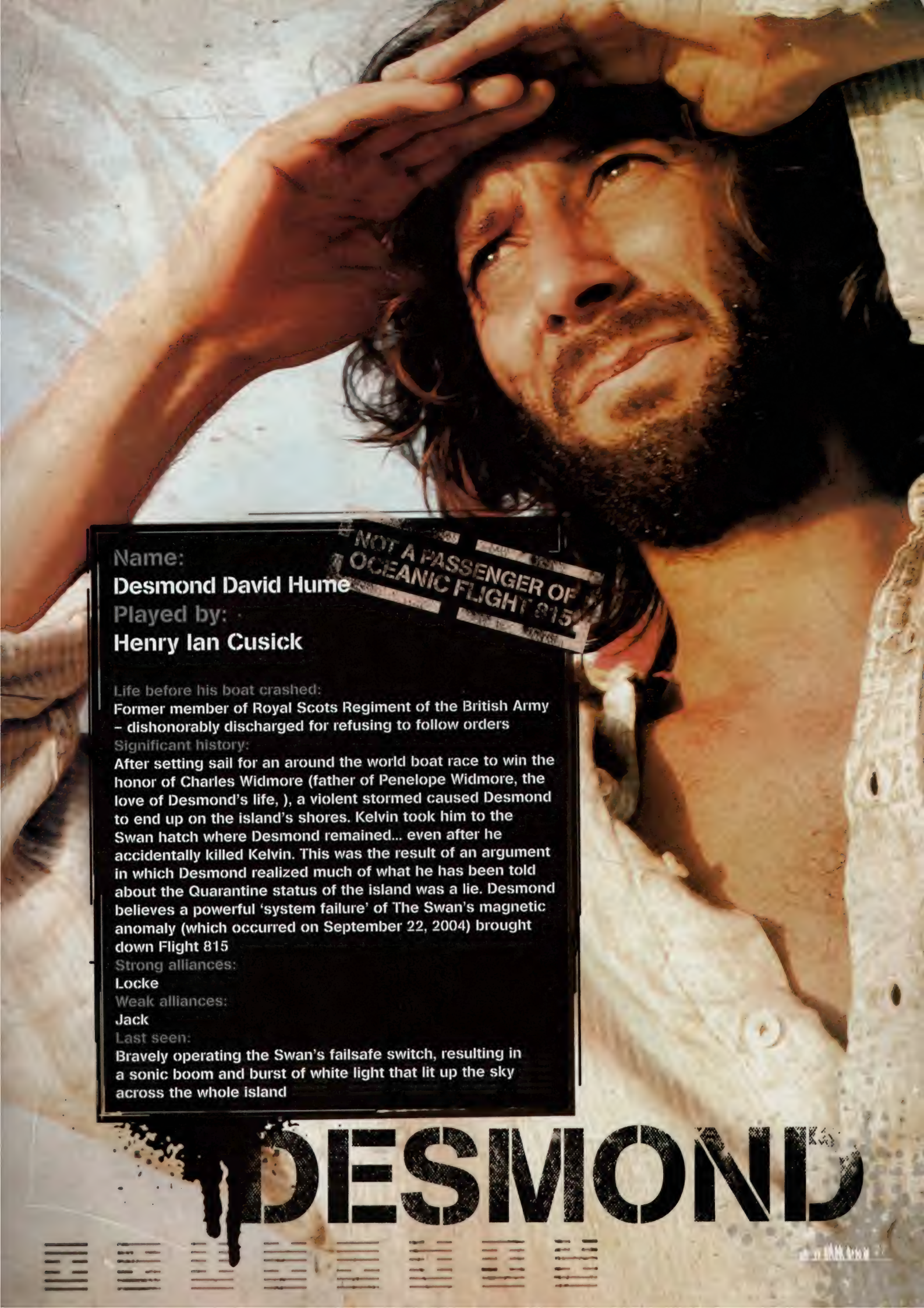
Jack, Hurley

Weak alliances:

None to speak of

Last seen:

Recovering from the sonic boom and the bright white light on the beach camp



Name:

Desmond David Hume

Played by:

Henry Ian Cusick

Life before his boat crashed:

Former member of Royal Scots Regiment of the British Army – dishonorably discharged for refusing to follow orders

Significant history:

After setting sail for an around the world boat race to win the honor of Charles Widmore (father of Penelope Widmore, the love of Desmond's life,), a violent storm caused Desmond to end up on the island's shores. Kelvin took him to the Swan hatch where Desmond remained... even after he accidentally killed Kelvin. This was the result of an argument in which Desmond realized much of what he has been told about the Quarantine status of the island was a lie. Desmond believes a powerful 'system failure' of The Swan's magnetic anomaly (which occurred on September 22, 2004) brought down Flight 815

Strong alliances:

Locke

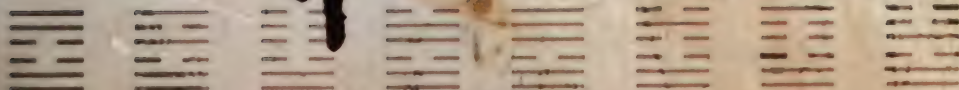
Weak alliances:

Jack

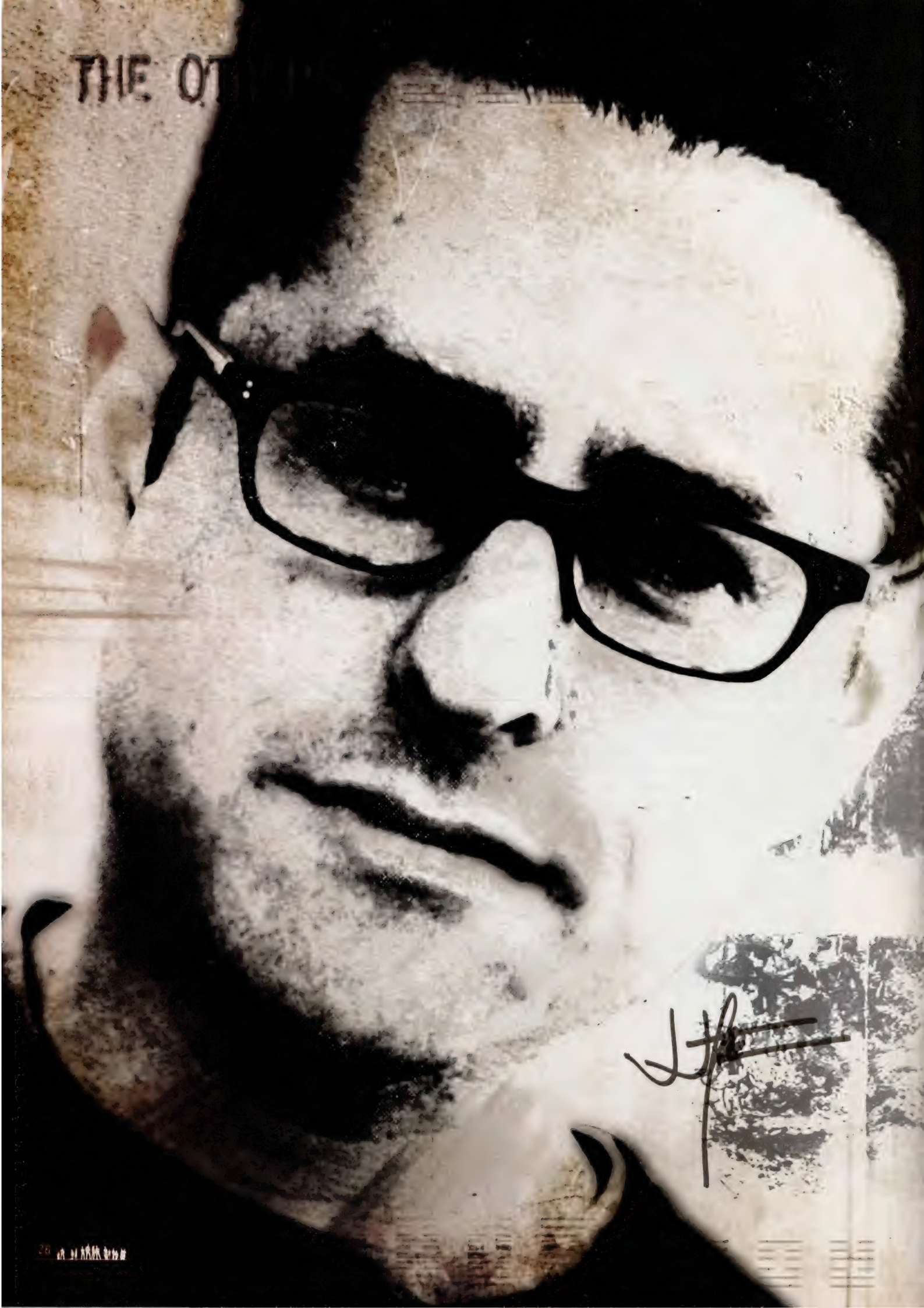
Last seen:

Bravely operating the Swan's failsafe switch, resulting in a sonic boom and burst of white light that lit up the sky across the whole island

DESMOND



THE OT



[Handwritten signature]

For part of our season three launch special, we thought it was only too fitting to do a couple of important things: give you the low-down of one half of *Lost*'s co-creator duo – J.J. ABRAMS – plus, find out his thoughts on season two, and of course, season three...

Words: Paul Terry

THE ISLAND OF J.J. ABRAMS



THE OTHERS

In the beginning, there was a show called *Felicity*. From co-creating that very popular high school drama with friend Matt Reeves, J.J. Abrams hit the ground running in 2001 and came up with a show that revitalized the concept behind what made a successful television series. When Abrams created *Alias* in 2001, he brought 'the cliffhanger' back with a vengeance. The spy-fi phenomenon that was *Alias* was way ahead of its time. Colliding the skills Abrams had crafted with his character-driven focus on *Felicity* with a giddy mix of end of the world conspiracies, it squeezed in eyeball-popping action sequences, a filmic orchestral score, and a ton of emotion. With most episodes of this televisual Molotov cocktail ending on a heart-stopping cliffhanger, *Alias* quickly reset the mold for the likes of *24*, *Prison Break* – and of course *Lost* – and pretty much every serialized show to follow. It seems that the arc-driven TV show is very much back and here to stay, and fans of these serialized shows have a lot to thank Abrams' *Alias* vision for.



In 2004, halfway through *Alias*' third season, Abrams teamed up with Damon Lindelof, and in the blink of an eye, *Lost* was born. With a string of awards attached to the island saga's first two seasons, *Lost* has planted firm roots in most of the planet's consciousness. A busy and highly sought after man in television, Abrams is now becoming the most sought after man in film... After co-writing and directing a little project starring Tom Cruise called *Mission: Impossible III*, Paramount Pictures have signed Abrams on to make their 11th *Star Trek* movie. (Fellow members of Team Bad Robot – *Lost*'s Damon Lindelof and Bryan Burk, plus Abrams' *M:I:III* Co-Writers Alex Kurtzman and Roberto Orci have also been attached to *Star Trek XI*.) Being the living definition of 'successful multi-tasking', J.J. Abrams' commitments to several ABC shows and this *Star Trek* film has not stopped him returning to the island for season three. In between a whole slew of meetings, and with 108 seconds firmly on the clock, Abrams kindly checked in with *Lost Magazine* to talk season two and how the seeds of year three are being sown...

When asked what he thought of *Lost*'s second year, Abrams explodes with the trademark excitement and enthusiasm that he has become famous for. "I loved season two of *Lost*! I thought, in many ways, it was a superior season to the first. I just thought that [Co-Creator/ Executive Producer] Damon Lindelof and [Executive Producers] Carlton Cuse, Bryan Burk and Jack Bender just did an incredible job. In fact, the whole cast and crew delivered an amazing season."

Although there are clear differences between the first two seasons, Abrams explained that, "I just look at it as a whole, and the whole series has evolved. I feel like some of the interpersonal relationships have really progressed. Then there are the additional characters that we've been introduced to." When quizzed on the mysteries of The Hanso Foundation and Dharma, Abrams smiles and teases, "The news that we've been given so far about the Dharma Initiative and what it's all about? Well, to me it's like the whole story has been like these layers of an onion. They're being peeled back now..."

Removing the outer layers of *Lost* has exposed a somewhat dark underbelly. Does Abrams feel that the ominous aspects of *Lost* have come to the surface and are here to stay? "Well, I feel like the darkness is there, but so is the light. Therefore, the relationships, the possibilities, the questions, and overall – the features of survival, are still there. The survivors of Flight 815 have been there now for quite a while and it feels like this show is at a much deeper place now than it was when it began." With the construct of *Lost* expanding, Abrams has a succinct answer to what remains, to him, the biggest appeal of the show. "I love delving into more of what this island is, and who the other survivors were [in their past lives]."



But that was *last* season. Just before Abrams heads off to meet with Team *Lost*, it's time to ask about year three. The question has barely been posed when Abrams excitedly says, "Can I just say this... season three? It's going to blow your mind!" Confirming rumors of a reunion that fans have been shaking with anticipation about – a J.J. Abrams and Damon Lindelof penned season opener – Abrams confirms, "Yeah – I'm actually working on the first script with Damon right now. I just think it's going to be an incredible year.

"This season is, in most ways, incredibly well mapped out," Abrams continues, full of anticipation for fans to experience it. "There have been a lot of talks about what the new season's going to be about, and co-writing the first episode with Damon is incredibly exciting." So are all the trademark 'tent poles' all in place for *Lost's* third season? "Damon and Carlton and all of the other writers got together really early on and started mapping things out," Abrams concurs. "They have done an incredible job putting the structure together of what this season is going to be. I think the story is just... well..." and there, Abrams just breathes out an exasperated sound. He's clearly very psyched to be on board the good ship *Lost's* third outing.

When we wrap up – reminiscing about how shocking the season two Penny cliffhanger was just before he heads off – Abrams is quick to reassert his feelings for this new season, "You just wait until this year! It's going to blow your mind." △



"Season three? It's
going to blow your mind!"

Words: Bryan Cairns

She kept her ability to speak English a secret from her Korean husband, Jin. She formed a very close bond with fellow crash survivor Michael. Now, going into season three, Sun finds herself pregnant, knowing that Jin is sterile – is this the result of a healing power of the island, or is there something else behind the conception? Just before season three gets underway, YUNJIN KIM talks exclusively about Sun's time on the island so far...

SETTING SUN

There's no disputing the passengers of Oceanic Flight 815 have been through hell. Crash landing on a bizarre island with an unstoppable 'monster,' stampeding polar bear, crazy French woman, haunting visions, and twisted murderous individuals hardly screams vacation brochure material. However, these strange circumstances could be a blessing in disguise. After all, there have been miraculous recoveries, and Locke astutely noted that, cut off from civilization, everyone has been given a new chance. Even Jack once commented about starting over. With no baggage, restraints, or preconceived notions, Sun Kwon certainly seems to have experienced such a rebirth.

The daughter of a powerful Korean businessman, she married her soul mate, Jin, but the two soon hit a rocky patch when he was forced to work for her father as a 'Special Assistant,' which seems to make him somewhat of an enforcer of Mr. Paik's Mafia-like dealings. The pair's relationship further deteriorated as Jin became more controlling and their dream of conceiving children was met with complications. Frustrated, Sun secretly took English lessons with the intention of leaving her husband at an airport in Sydney, Australia. Ultimately, she had second thoughts and boarded the doomed plane with him. Since the accident, Sun seems to have gradually stepped out of Jin's shadow. "To begin with, Sun has been through a lot of changes," says actress Yunjin Kim about her alter ego's growth. "For example, right now, she's pregnant. That is big. Sun's character has evolved immensely, especially involving her relationship with her husband, Jin. We started out in the pilot with 'button up your shirt' to wearing a bikini. She's slowly becoming her own person. You see that through the flashbacks. Sun had a very domineering father and mother but was very wealthy. She probably grew up with nothing to worry about, especially financially. But finding herself on this mysterious island, away from her specific surroundings and society, it allowed Sun to become more of herself."

That inner strength has been displayed on numerous occasions. Going against Jin's wishes, Sun began to interact with her fellow survivors and contribute to their needs. Her knowledge of herbal medicine proved invaluable during Shannon's asthma attack, she has assisted Jack in medical matters, and has cultivated a vegetable and herb garden. In essence, Sun's new found assertiveness seems to have made her, in some ways, Jin's equal. "Oh, I hate that term," remarks Kim. "I think she's always been his equal. If anything, Sun has been socially above Jin but because she loved him so much, she really lowered herself to his standards. That is how I saw their relationship from the beginning. From the very first time when they met, to the process of getting permission from her father to get married, and Jin's dedication to gain her was great. I never really saw their relationship as not equal at that point. Because they loved each other, they had to change. For her, it was letting Jin take the lead to make up for all the sacrifices he had to go through."


The island didn't alleviate every obstacle for happiness though. During a fistfight between Michael and Jin, Sun desperately shouted out in English, revealing she was capable of speaking another language. Feeling betrayed, Jin declared their union over. Later, the two reconciled before he departed on a raft with Sawyer, Michael, and Walt in search of help. However, after an encounter with the Others, all evidence pointing to the raft team's demise only reinforced her love. "She went through the obvious," says Kim. "The reason she never left him at the airport or the reason she did go through with the marriage... Despite all the hardships that go on because of their marriage, Sun really loves Jin."



BY THE FIRE 



"Sun's character has evolved immensely, especially involving her relationship with her husband Jin. We started out in the pilot with 'button up your shirt' to wearing a bikini. She's slowly becoming her own person."



“ I called
[Executive
Producer]
Carlton Cuse
and said, ‘You
know what?
I need to know
whose baby
this is.’
And Carlton
was like,
‘I can’t
give you
that answer
right now.’ ”

But love can lead even the most devoted couple astray as events in *The Whole Truth* further complicated matters. That flashback established that while Jin and Sun wanted children, Sun was unable to have any. In actuality, it was Jin who was sterile. When it was revealed that she is with child in the present day, Sun swears she had never been unfaithful. Assuming the pregnancy was due to the strange properties of the island, the two embraced although there are still doubts over the identity of the father. "I was very intrigued when I read the script," explains Kim. "I called [Executive Producer] Carlton Cuse and said, 'You know what? I need to know whose baby this is.' And Carlton was like, 'I can't give you that answer right now.' So I was all, 'What do I do with that very last moment when Sun is alone? Should I look worried or should I look happy? Just give me some type of direction.' Carlton said, 'Be as ambiguous as you can,' so obviously they wanted to leave that door open. It is not like they have to deal with it until season seven anyway – by this rate, we are only on approx. our 70th day [laughs]. I don't think Sun will be showing until something like season four. It was really bold to deal with it later. The whole pregnancy gives Jin and Sun, I don't want to say conflict, but it gives them a dramatic storyline."

Obviously, nothing is set in stone in terms of their little bundle of joy yet that doesn't stop Kim from guessing. "It could go any way," she declares. "Sun could have a miscarriage, have an accident and lose the baby, or go through the pregnancy and realize it is not Jin's baby. Or all throughout the pregnancy wonder whose baby it is, or if Jae Lee's character and Sun did have an affair. Everything is so open so it leaves a lot of new possibilities."



Viewers and even those working on the series formulated another theory that could send an enraged Jin over the edge. Previously, Sun had confided in one of her fellow survivors and there was speculation their friendship heated up to the next level. "Yeah, some people think the baby is Michael's," confesses Kim. "A lot of the crew members thought that would be the most interesting. And in the beginning, they were developing an interest towards each other in season one." And how would Kim feel if Sun had cheated on her husband? "I think it is great! For some, that might not be the case but for an actress, the bigger the conflict, the better it is for both of us."

Perhaps Kim should be careful what she wishes for. After all, after yearning for something more physical for her character, Sun was attacked while attending her garden alone, a bag thrown over her head, and she was dragged through the jungle. Thrilled with the scene, Kim immediately jumped to the same conclusion as her castaways. "I thought it was one of the Others," she says. "That was Sawyer's episode and Charlie had his own good reason to kidnap Sun which was to get back at Locke and make him look stupid. That was the line. I was sort of disappointed that it got resolved a little too quickly. That type of event usually lasts an episode or two but it was resolved right away. I had a great time shooting that scene, since I don't get to do a lot of action stuff or even running for Sun's life on *Lost*. It was the very first time she was even in jeopardy so I was glad when I read it."



TAIL SPIN

There is never a lack of fresh faces on *Lost*, so when Sawyer, Michael, and Jin washed up on shore in season two, no one expected them to run into another group of survivors. Now, YUNJIN KIM reflects on how the Tailies spiced up the year...

"*Lost* will always need new characters to shake the group up," says Kim. "I thought it was fascinating to see the Tailies and their first 48 days. I have a feeling it might be like that with the Others for this season, but of

course, I don't know anything until I get the scripts. Other than the original group, it is always interesting to see their point of view and always at the end, you get to learn more about the island."

RAISING THE BAR

As a result of what transpired, Sun and Jin later clashed over her safety and although he has been criticized for his over protectiveness, in this case, Kim believes it was understandable. "There was a scene where, early in the morning, Jin gets up and Sun is missing," explains Kim. "Jin goes to Libby and says, 'Sun! Sun! Sun!' Libby understands him and says, 'Oh, I don't know. There was a short explanation for him searching two different places but it was cut out. If that had been added, it would have been more justified. In the whole story, not every action is justified because we have limited time. Sometimes it is in the script but ends up on the cutting room floor. The main storyline of *The Whole Truth* was her being pregnant. You go back to the flashbacks and think Sun is having an affair but then no, she's taking English lessons. I know we will go back to Sun and Jae Lee in season three to put some closure on it."

The last few episodes shook *Lost* audiences to the core when Michael fatally shot Ana Lucia and Libby in order to save Walt from the Others. Upon delivering Kate, Sawyer, and Jack to the ruthless group of outsiders, father and son were reunited and the pair sailed off, presumably leaving the island behind. "I was sad to see Harold [Perrineau] go for now," sighs Kim. "We don't know what will happen. We have no idea, but I was sad to lose a friend on the island and personally to see Harold go. As far as the storyline, even having read the episode, I was still shocked when I saw Libby coming in with the blanket and Michael just shooting her. Seeing it on television, even though I knew what was going to happen, I was still like, 'Oh my God!' It was one of the best 10 minutes of an episode of *Lost*. It was traumatic and great!"

*"Having read the episode, I was still shocked when I saw Libby coming in with the blanket and Michael just shooting her. Even though I knew what was going to happen, I was still like, 'Oh my God!' It was one of the best 10 minutes of *Lost*..."*


Out of the starting gate, *Lost* was a ratings phenomenon and Emmy award winning series. Looking forward, YUNJIN KIM addresses the pressure of maintaining such high quality and expectations...

"That is more of a challenge for the writers and producers than the actors," offers Kim. "As an actor, [the challenge] is to keep doing what I am doing and be as truthful as I can on that mysterious, mystical island. A lot of times, we don't have any answers, so we just treat each episode as a mini movie and just work with what we have. But the trick is to believe in it, and make it as realistic as you can, and hopefully the audience will keep watching and keep talking about our show. When you have a big success, it is hard to keep it up, but so far, we've done it. Hopefully, we'll do it again next season. I thought this year's finale was better than last year, so maybe season three's finale will be even better."

The finale also featured Sun, Jin, and Sayid off the island and on the water, prepared to rush in as the cavalry if the confrontation between their friends and the Others went terribly wrong. "We all got sun and wind burned," recalls Kim. "My forehead was peeling after three days but I had a great time. It was wonderful being out on the water and hanging out with a limited crew and of course, Naveen and Daniel. It was a lot of fun. I actually got to take the wheel while we were shooting. Because I had to – and partially because I wanted to – I learned to turn the wheel, keep it steady, and operate the boat a little. I got some lessons on that so I loved being on the water. I didn't get sea sick so I was really proud of myself."



BY THE FIRE



When Kim signed on to *Lost*, she had no idea what to expect. Having already carved out an impressive film career in her native Korea, the talented actress was used to being the leading lady and had to adjust to a TV format where the spotlight continually shifts on so many characters and the show's ensemble cast. "One thing I did learn from joining the cast of *Lost* was how to throw the ball when it is their turn," acknowledges Kim. "It is sort of like being on stage where when it is somebody else's turn, you give all of your energy and support to that one actor. Then, when it is your turn, you receive the exact same support from the whole crew. In the beginning, it was something I had to get used to but once I did, I really learned to appreciate what [being part of] an ensemble really means. It is a very humbling experiencing when you are used to leading a film or getting 80 per cent of screen time. I really feel *Lost* wouldn't be *Lost* if it was just concentrating on one or two single characters."

Over two seasons, *Lost* hasn't pulled any punches and to amp up the shocks and the severity of their predicament, regular characters have been killed off. Boone was the first one tragically bumped off, followed by his stepsister Shannon, and most recently Ana Lucia and Libby. Those fatalities have put the islanders on pins and needles and they aren't the only ones. All of the actors consider *Lost* a dream gig so naturally no one wants to unexpectedly go home in a body bag. "Of course that worries me," admits Kim. "As a person, you like to know what is going to happen in the future, or you would like to be in control of planning your life. Frankly, as an actor, that is impossible. I never knew I was going to be working on a career for the last seven years. Before joining *Lost*, I planned to be out in Korea shooting a mini-series and then be back in New York doing theatre. Then one thing led to another and I ended up staying here. This is one of the best things that has ever happened to me. So as an actor, you can't plan everything. Yes, it worries me. That is the hard part, not knowing when you are going to get that script or phone call but what are you going to do? That is the life of an actress."





ORIENTATION FILM ANALYSIS



We have the knowledge. We know now that when the missing film section was spliced back into the Swan's reel it revealed that the computer was not to be used for anything other than the entering of the numbers. BUT, it was removed... and there are other places where the film jumps. Here's a transcription of what the original film told us, complete with *Lost Magazine's* personal notations that you should bear in mind when conducting your own Dharma investigations...

Compiled by Natalie Barnes

ORIENTATION FILM
STATION 3
SWAN

CREATED/FOUNDED?

ANY PREVIOUS
INCARNATION?

WELCOME, I'M DR. MARVIN CANDLE, AND THIS IS THE ORIENTATION
FILM FOR STATION 3 OF THE DHARMA INITIATIVE.

IN A MOMENT YOU'LL BE GIVEN A SIMPLE SET OF INSTRUCTIONS FOR
HOW YOU AND YOUR PARTNER WILL FULFILL THE RESPONSIBILITIES
ASSOCIATED WITH THE STATION. BUT FIRST, A LITTLE HISTORY.

THE DHARMA INITIATIVE WAS CREATED IN 1970, AND IT IS THE
BRAINCHILD OF GERALD AND KAREN DEGROOT AND IT IS THE
CANDIDATES AT THE UNIVERSITY OF MICHIGAN. FOLLOWING IN
THE FOOTSTEPS OF VISIONARIES SUCH AS B.F. SKINNER [THERE
IS A JUMP CUT/SPLICE HERE] IMAGINED A LARGE SCALE COMMUNAL
RESEARCH COMPOUND WHERE SCIENTISTS AND FREE THINKERS
FROM AROUND THE GLOBE COULD PURSUE RESEARCH IN
METEOROLOGY, PSYCHOLOGY, PARAPSYCHOLOGY, ZOOLOGY,
ELECTROMAGNETISM, AND UTOPIAN SOCIAL SPLICE DANISH
INDUSTRIALIST AND MUNITIONS MAGNATE ALVAR HANSO WHOSE
FINANCIAL BACKING MADE THEIR DREAM OF A MULTI-PURPOSE
SOCIAL SCIENCE RESEARCH FACILITY A REALITY.

WHO IS
THIS?

WHY THIS
LONG??

YOU AND YOUR PARTNER ARE CURRENTLY LOCATED IN STATION 3,
ORTHE SWAN, AND WILL BE FOR THE NEXT 540 DAYS. STATION 3 WAS
ORIGINALLY CONSTRUCTED AS A LABORATORY WHERE SCIENTISTS
COULD WORK TO UNDERSTAND THE UNIQUE ELECTROMAGNETIC
FLUCTUATIONS EMANATING FROM THIS SECTOR OF THE ISLAND.

??

NOT LONG AFTER THE EXPERIMENTS BEGAN, HOWEVER, THERE WAS
AN INCIDENT. AND SINCE THAT TIME THE FOLLOWING PROTOCOL HAS
BEEN OBSERVED: EVERY 108 MINUTES THE BUTTON MUST BE SPLICE
PUSHED. FROM THE MOMENT THE ALARM SOUNDS YOU WILL HAVE
4 MINUTES TO ENTER THE CODE INTO THE MICROCOMPUTER PROCESSOR
EITHER YOU OR YOUR PARTNER MUST INPUT THE CODE. IT IS HIGHLY
RECOMMENDED THAT YOU AND YOUR PARTNER TAKE ALTERNATING
SHIFTS. IN THIS MANNER YOU WILL STAY AS FRESH AND ALERT SPLICE
UTMOST IMPORTANCE THAT WHEN THE ALARM SOUNDS THE CODE BE
ENTERED CORRECTLY, AND IN A TIMELY FASHION. DO NOT ATTEMPT TO
USE THE COMPUTER [SPLICE] FOR ANYTHING

WHAT IS
MISSING
HERE

CONGRATULATIONS, UNTIL YOUR REPLACEMENTS ARRIVE, THE FUTURE
OF THE PROJECT IS IN YOUR HANDS. ON BEHALF OF THE DEGROOTS,
ALVAR HANSO AND ALL OF US AT THE DHARMA INITIATIVE, THANK YOU.
NAMASTE. AND GOOD LUCK.

THE HANSO FOUNDATION, 1980. ALL RIGHTS RESERVED.

WHAT IS
ITS FUTURE?

4/8/15/16/23/42

He outlived Oceanic Flight 815's crash, only to be killed by another – whilst exploring the Nigerian drug plane, it dislodged itself from the vines in which it was trapped and plummeted to the ground. Unable to recover from his injuries, Boone became the first of the main characters to fall foul of the island's deadly environment. **IAN SOMERHALDER** reflects by the fire on Boone's story, and talks exclusively about his forthcoming horror film *Pulse*...

Words: Bryan Cairns

DEAD MIAN'S CHEST

The concept of *Lost* was initially kept very secret so when you got the sides, which didn't reveal very much, what attracted you to the series?

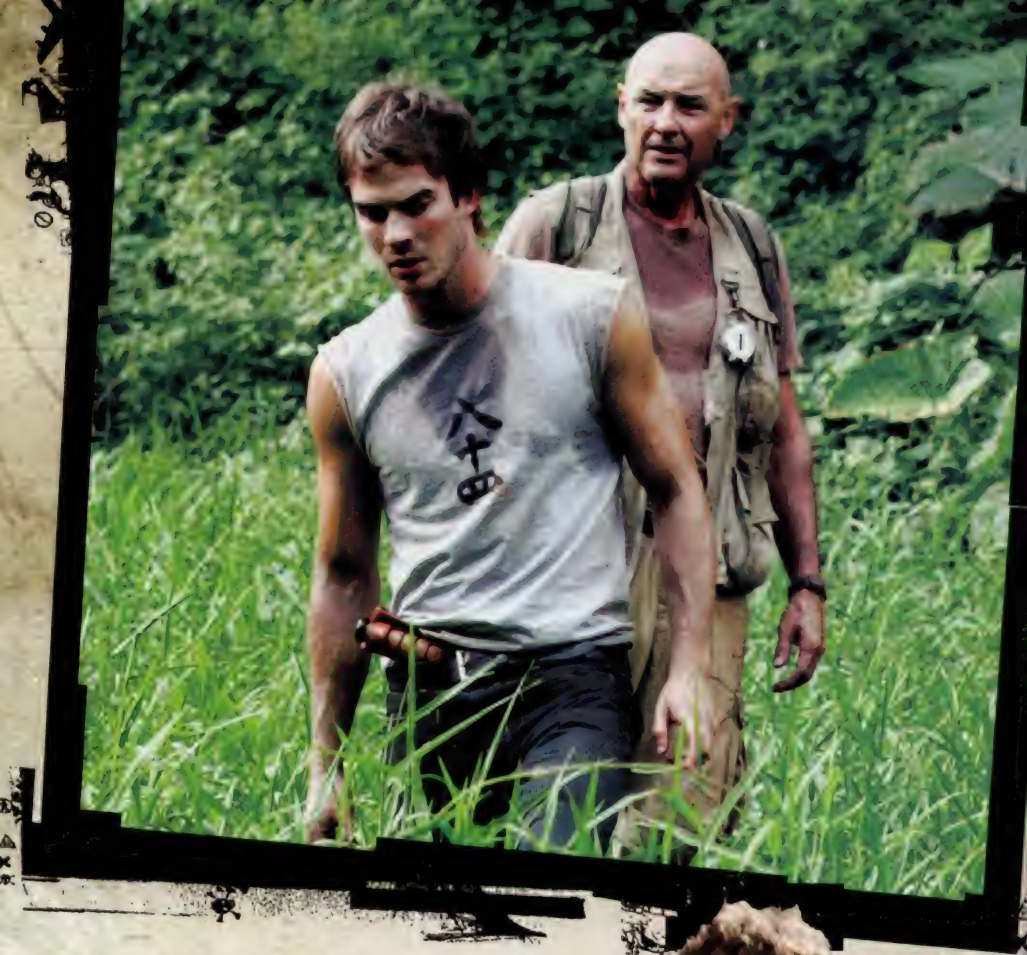
There was a certain mystery, but it was J.J. Abrams – that is the tell tale sign that it is something of quality. Thankfully, it ended up being that. One of the things you look at is who is writing, directing, and producing, and J.J. had his name all over it. And the location... Hawaii! Hawaii and J.J. didn't sound like a bad pair.

When you jumped on board, what kind of discussions did you have with J.J. about Boone?

It was a very limited conversation, and I think that was the same with everyone. We didn't know that much at all. It was along the lines of 'a guy who loved his sister and her safety was the utmost importance to him.' Obviously, he wasn't the most technically savvy guy when it came to surviving in a wilderness, which a lot of people aren't. That was sort of Boone's shtick. His sole goal in life was protecting Shannon.

Was it frustrating not knowing about Boone's backstory until late in the game?

At first sight, it appeared to be a bit of a hindrance, because as an actor and in a feature film situation, you know the end of the movie and [are able to] explore what is in between the first and last page. The fear was, in theory, if I reacted in a certain way in episode six but in episode 11 that was the wrong choice, all of a sudden you are very quick to judge yourself and you get upset. It is the old adage of, "If I knew then what I know now..." That translates to something interesting because we don't know in life what is going to happen each day. It is the basic dichotomy of wanting to know everything and having the patience and understanding that those guys knew what they were doing. The bottom line is you are in their hands. I learnt to really love working that way.



A lot of your early interaction was with Shannon, and then John Locke took you under his wing. Were you excited about that development?

Absolutely. It's Terry O'Quinn... I couldn't go wrong either way. I was either going to be with the man of science or the man of faith. Either Jack was going to take Boone under his wing or Locke was. And waking up every morning to go to work with Terry is not the worst thing you can possibly do.

At one point, it seemed Jack and Boone were becoming buddies instead...

We faced off in the beginning and maybe there was some kind of understanding that came between them. To be honest, that was what I was hoping to happen. Matthew Fox and I are pretty close and I really dig him as a human being and an actor. However, I didn't see the Locke/Boone storyline coming and when I realized that it was, it was pretty exciting.



"If you really looked into Shannon's soul, she was once pure, this beautiful, sweet, innocent creature. Life made her make choices to survive and sometimes survival takes away your innocence."

Were you shocked by the intimate relationship the two siblings shared?

I was dying for it. If you really looked into Shannon's soul, she was once pure, this beautiful, sweet, innocent creature. Life made her make choices to survive and sometimes survival takes away your innocence.

When you first read the script in which Shannon gets mauled by the 'monster,' were you concerned she was a goner, or did someone spill the beans that it was all an elaborate hallucination?

Maggie [Grace] and I were sitting on set one day and I think we actually got in trouble for this. We sort of inadvertently picked up a treatment for that episode and read, "Boone is really upset when Shannon dies." We read that in the context of a treatment, not knowing the full script, and it was really hard. It was a bad day. Obviously it is not what happened. I kind of knew beforehand that there was a trick in the script and it was a great device. There are so many life lessons in these scripts that are really intense and relevant. That happening to Shannon really opened up Boone's eyes.

How did you find out Boone was going to die and what was your gut reaction to it?

Well, I found out a couple of days after the Golden Globes. It was good timing and I am glad they told me when they did because I was going back to Hawaii to look at houses to buy. We knew one of us was going to go. I wasn't surprised by any stretch of the imagination – it made sense to me. I loved Hawaii and it is truly a part of me. I am just an island boy. I don't function if I am not by the water. This experience was so great, you don't want to leave. But there is a silver lining, leaving a show like *Lost*. It is what it is. I don't say that with even one half of an ounce of negativity. In hindsight, it made sense to me.

Since *Lost*, you've kept busy. With this summer's feature film *Pulse*, you are journeying into the horror genre. Who do you play in this remake and what intrigued you about the plot?

The guy is just sort of a computer geek and finds himself in a precarious situation. What was interesting about the movie is that there is a physical aspect that is not completely beyond the realm of possibility. The movie was, to sum up the Superstring Theory – there are several dimensions in this world we know of and there is a possibility of many more. If everything is merely energy, what if ghosts and spirits have a certain frequency? What if we produced a frequency that ended up attracting them or allowed them to access us? Think about it – our whole world is run by computers and the internet... it isn't completely unheard of and could actually happen.

Have you seen the original *Pulse*?

Yeah, I remember watching it when I was in my room in Romania where we were shooting. There is one scene in the movie where this female ghost is walking towards the camera – she sort of trips and slips – and this guy is seeing her. It is utterly eerie and I was sitting on my bed with my back to the wall and I was so freaked out. I realized, "Wow! There is a rush to watching pretty scary movies!" There is something that it does to you that is pretty captivating.

Shooting *Lost* in Hawaii definitely gave it a remote island vibe so did filming *Pulse* in Romania add to its atmosphere?

Oh yes! Absolutely. The people of Romania are very proud and happy with what is going on there politically. They are much freer than they have ever been but there is a presence that is sort of mysterious, almost like when you work around Prague. Romania is a little darker too, so it added an extra layer to it.



On *Lost*, Boone was stranded with no luxuries, and in *Pulse*, computers prove to be your downfall. How dependent are you on technology?

I've tried not to make myself too technologically dependent. I've pretty much simplified my life. My business partner and I started a production company and he is a computer [laughs]. He's a technological genius so I've learned a lot. Technology allows us more output with less input. It is great, but I have taken a step away. I get on my computer to check my email and read the New York Times online and that is really it.

Japanese horror movies tend to breed sequels. Would you do *Pulse 2*?

I don't know if my character is still alive [laughs]! There are a couple of ways they can end the movie and I'm not sure how they want to do it. Would I go back and spend another 12 weeks of my life with Kristin Bell? Absolutely, but that is up to how well the first one does and whether Bob Weinstein kills me or not [laughs].





**SOMETHING
A FOOT**

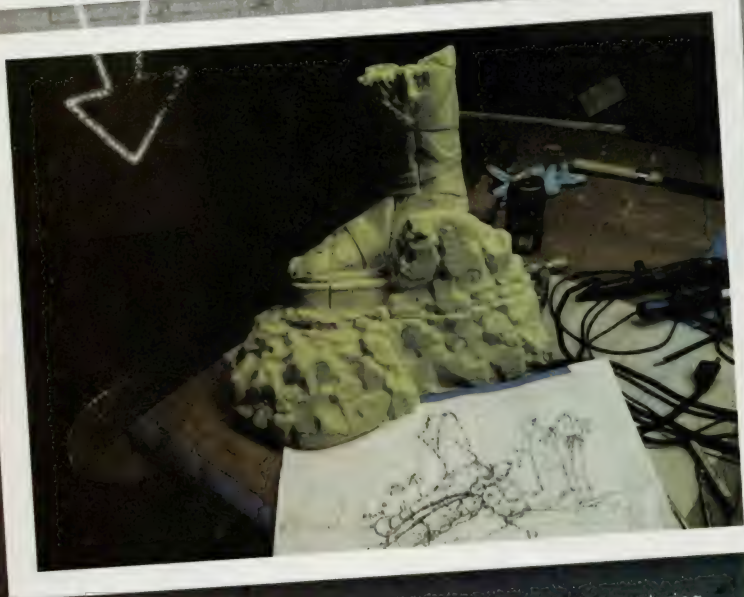


THINGS'S



One of the most jaw-dropping scenes in season two's finale was the sight of that colossal foot on the coastline. Who built it? With exclusive photography from his own personal collection, Lost Sculptor **JIM VAN HOUTEN** explains how the giant statue came to be...

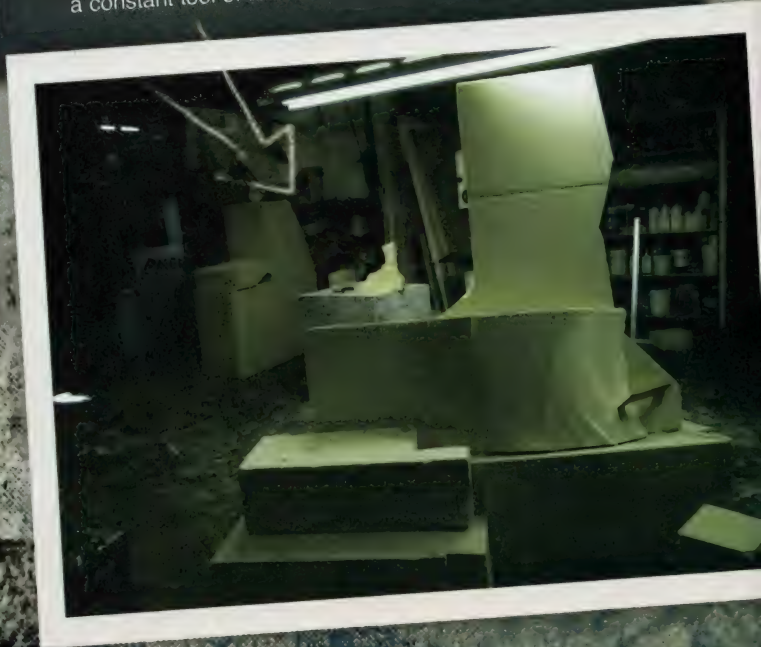
Dark Territory

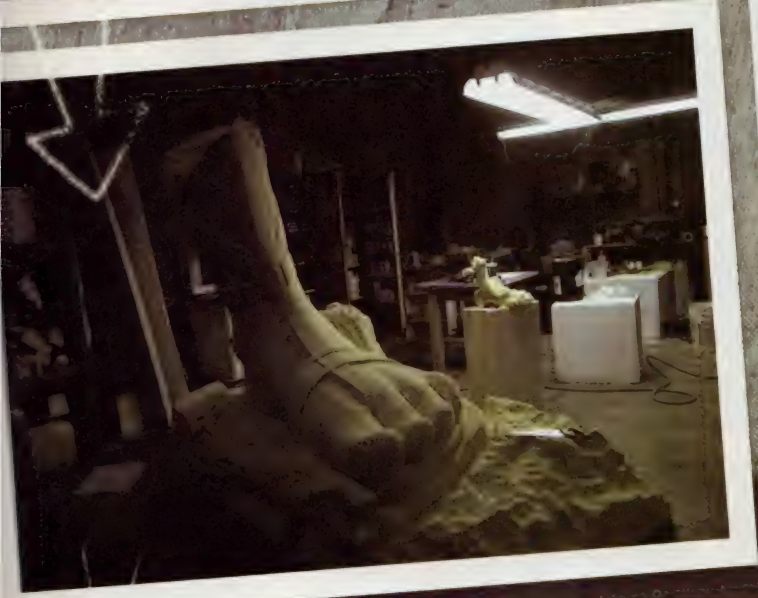


• This first set of photos shows the maquette with the rendering. It was first envisioned that it would be sitting at a slight angle, as if the ground it rested on heaved under some Teutonic force.



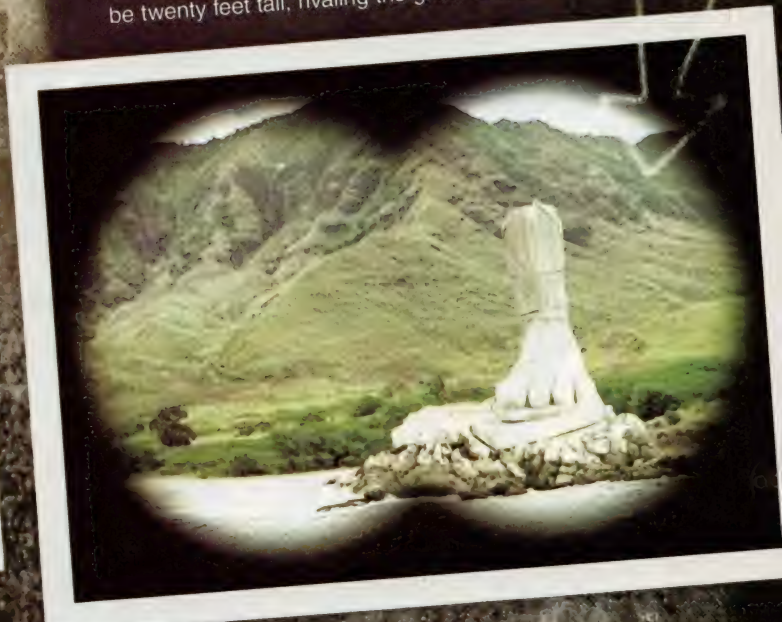
• The maquette was then enlarged six times. This second series of pictures shows the 'rough out.' I started with two-foot by four-foot by eight-foot blocks of two-pound urethane foam. The foam had to be air freighted in because none exists on the island here. Using large saws and hand tools, the blocks quickly take shape. You can actually see the original maquette in the background on that desk – it's a constant tool of reference.






- In these final series of photos, you can see that the foot receives its paint job and ageing process. Ross Anderson is lead scenic painter for a second year now.
- It was in this stage that the designers requested the base to be removed and the foot righted to the orientation that it was used in the finale.

- Through the magic of Visual Effects, headed up by Kevin Blank, when the foot is inserted into the shot, it appears to be twenty feet tall, rivaling the great Colossus at Rhodes.





After receiving multiple injuries from Flight 815, a 'sympathetic' gunshot from Sawyer, and a little help from Jack eventually saw US Marshal Edward Mars pass away. However, through *Lost's* flashback devices, he lives on, and we are gradually putting the pieces of the Marshal-pursuing-Kate puzzle together. FREDRIC LANE talks exclusively about *Lost's* physical side, his initial theories about Kate's origins, and stripping off to rid himself of fake blood...

Words: Bryan Cairns

DEAD ON ARRIVAL



"I've been in this industry for 30 years and I've seen success not be good for some, but these people are grounded, appreciative, and friendly. It is always a pleasure to pop in and see how they are doing."

You've been around since the pilot. How did that come about?

I did an episode of a show called *Crossing Jordan* and Damon Lindelof had written that episode. My character had a long, painful, protracted death and I guess Damon likes the way I die so he kills me as often as he can [laughs]. They give me a lot of exposition and I am pleased as punch to be associated with something as classy and successful as *Lost*.

Do you have any theories about the show?

During the pilot, J.J. Abrams would say things like, "When you pick up that glass of water and drink it, it is very important." And you stopped asking, "Why" really quickly because they wouldn't tell you. You would say, "How important? On a scale of 1 to 10, important in a good way or in a bad way?" They'd give you, "Well, it is in a life and death way, at about an 8.5." For me, everything has to be specific. I had to make up things like Kate is an alien or Kate is a biological experiment. In the very first scene I ever did with Evangeline [Lilly] – which was the first scene she ever did as an actress – I say to Kate, "Are you sure you don't want any more juice?" Now that seems like a simple line but when you don't know what is going on or that she may be an alien or an experiment, maybe this juice suddenly becomes very important like the sugar water in the original *Men in Black*. I did little things like that which made the lines interesting.

What do you remember about shooting that plane turbulence sequence and did they repeatedly hit you in the head with a suitcase?

I kind of forget. It was maybe once too many [laughs] but not as many as it could have been. It was rubberized, hard rubber, and I did have a headache for a day and a half after that. That plane sequence was a lot of fun though. There was plenty of technical, imaginative gadgetry going on such as blowers, fans, hydraulics, winches for the stunt people, and blue screen. J.J. directed that and he's the best.

In the flashbacks, does the Marshal thrive on his and Kate's cat and mouse game?

Well, the Marshal is a law enforcement guy so he has probably always had a power trip going on. That's my opinion anyway. I don't think it was the Marshal who started playing the head games. He's just giving back what he gets. And he certainly isn't going to let Kate get the last word in.

On a few occasions, you get rough with Kate...

Yeah and I always seem to get the short end of the stick on that [laughs]. My son is a freshman in high school and people walked up to him and said, "I saw that little girl beat your Dad up twice last night on television!" But it's all in good nature.

The Marshal tried to strangle Kate and later she slams him into a wall before he elbows her. How do you approach such physical scenes?

You have to come up with some specifics of your own, on why you are doing this and why you feel it is the only thing you can do. Some actors call it motivation. As for the physicality, it just goes by the numbers because nobody wants to get hurt on the set although it happens all the time.

BY THE FIRE



Do you have any funny anecdotes about guest-starring on the series?

When they first hired me, they said, "You'll be lying on the beach unconscious in Hawaii." I said, "I can do that. As a matter of fact, I've done it before." But after about five or six hours of lying on the beach covered in blood, bandages, dirt, and that wool suit, all of a sudden it's no longer paradise. People come up to you and squirt fake blood on you for the next take and you can't roll over. It got a little tough, so at the end of the day, I ran down to the beach as far away from them as I thought I needed to, then took all my clothes off, and jumped in the water. I couldn't wait to de-grime myself. When I came back, I found out they had seen me, turned the camera on me, and that footage is running around somewhere.

What is it like working with Evangeline Lilly and Matthew Fox?

People say this all the time – that *Lost* is a bunch of wonderful people – and it is absolutely true on this one. Matthew is a humble, funny, intelligent man. He's very serious about his work. Evangeline is naturally talented. She's eager, hard working, and knew right from the start this was not going to go to her head. I have the advantage of having a perspective on this. I was there for the pilot episode and a couple of months ago, I was back to shoot another episode. This show has become one of the biggest things to ever hit television and all the actors have become very successful. I've been in this industry for 30 years and I've seen success not be good for some, but these people are grounded, appreciative, and friendly. It is always a pleasure to pop in and see how they are doing.





PEARLS OF WISDOM

Our Quarantine & Analysis zone as you knew it, is no more. Due to the impossible task of broadcasting from the Swan – which is now more like an oversized crumpled tin can – our Q&A team have convinced *Lost* Co-Creator/Executive Producer DAMON LINDELOF to relocate to the Pearl station. Eight fan questions await him...



1. Thanks for an awesome season two! Did you relax over the summer months so that your *Lost* brain is well-rested for the new season?

Simon Jefferson, Santa Monica, USA
Summer months! Ha! We writers get about three weeks off between seasons, then we charge back in! I went on an AMAZING trip to Italy with my wonderful wife, Heidi. They're just about to start season two there, so they were all asking, "Che cosa nel portello?" Roughly translated: "What's in the hatch?!"

2. Can you tell us one character from the season three opener that is going to shock us all?

Brian Cooper, Winnipeg, Canada
Yes. His name is Mr. Winklepoo and he's a magic blanket.

3. I love the scary parts of the show loads: will it be long before the 'monster'/Dark Territory stuff crops up again?

Julia Hardy, Camden, England
The monster is DEFINITELY coming back in a major way, so there's gonna be a helluva lotta croppin' up, baby!

4. Sawyer loves to read... but what cool books have you enjoyed recently?

Debbie Truant, Cincinnati, Ohio
I wish I had a chance to read more. Recently, I just read William Goldman's *The Princess Bride*, which is one of my favorite movies, but an even better book!

5. I'm suspicious of Sun in *The Whole Truth*... will we get some more info on Jae Lee in season three?

Paul Williams, West Norwood, England
You are not wrong to be suspicious! And think... we actually felt sorry for her in the Pilot. How things change. And you ain't seen the last of Jae Lee either.

6. I am loving your work on *Ultimate Hulk vs Wolverine*. When is the next issue due out, and are you thinking of doing any other comics?

Ned Hartley, *Lost Magazine* Assistant Editor
Ugh. I am SO bad about my comic deadlines. My guess is you'll get issues three to six sometime before the end of the year.

7. If you had to live off Dharma supplies, would you take an Apollo candy bar or Dharma beets with macaroni?

Lauren Landman, Fenwick, Scotland
Wow. That is a TOUGH one. I really love Dharma beets (excellent for making Dharma borscht)... but I don't know about mixing it with macaroni. I think I'd have to go off the menu here and choose roast boar.

8. On a scale of one to 16 (16 being off-the-chart Intensity), how intense are the first few episodes of season three going to be?

Katrina Welsh, Broome, Australia
13.7. And I've measured that! I know you were hoping for 16, but we have to have SOMETHING to work up to, right?

Got a question you want to ask Damon Lindelof? No problem. We'll be sending him down into the Pearl hatch for another interrogation next issue. Email the Pearl at: Voices@titanemail.com

**BEYOND
THE HATCH**

'Beyond the hatch' is exactly where this section will take you. Due to the overwhelming response to the storyboard-to-screen comparison we included in issue #4, we've decided to compile another one for you. With the original storyboards by MIKE SWIFT, see just how different Kate's air vent adventure was on paper, before it ended up on the screen in *Adrift...*

Compiled by Paul Terry

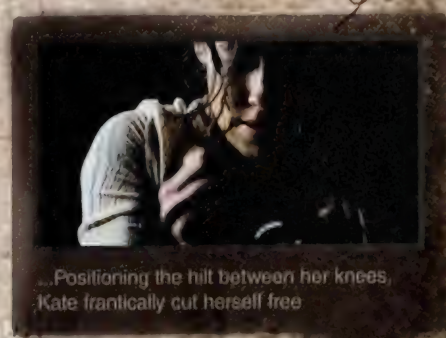
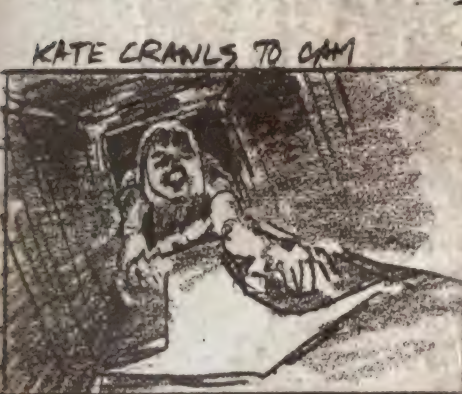
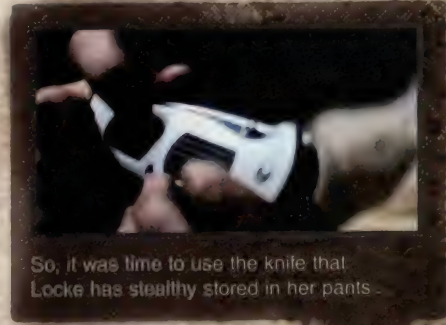
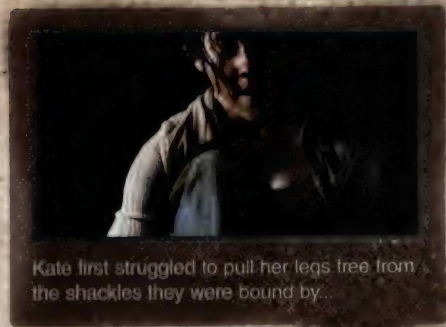
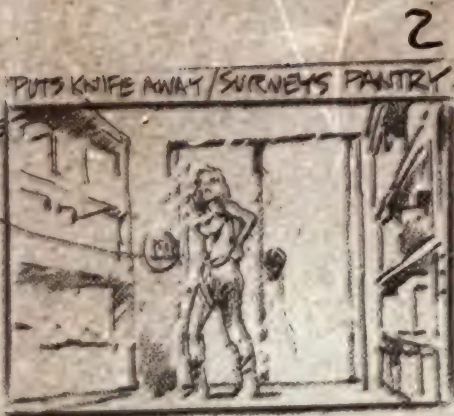
THE KATE ESCAPE

SEASON TWO

LOST

SPOILER ALERT

HOW IT ACTUALLY HAPPENED...





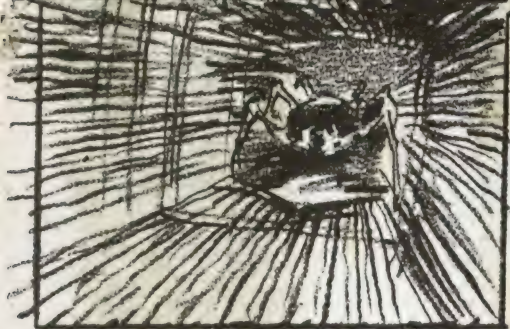
...INTO SPIDER WEB

9



KATE PON / SPIDER COMING

11



CRACKET / CRACKET

13

KATE BACKS INTO CORNER



...KNIFE!

15



KATE CLEARS HER FACE

10



KATE BACKS UP

12



SPIDER TO KATE / HE GOES FOR HER...

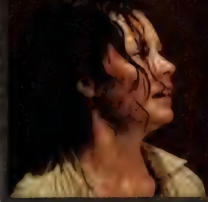
14



9.25

MUSIC O.S. MAMA

16



Then, Kate tries the door, but quickly realizes there is no way to open it...



She then spies what kind of room she is in: It's a pantry crammed full of food supplies



Kate moves one of the crates so she can stand on it and gain access to the air duct...

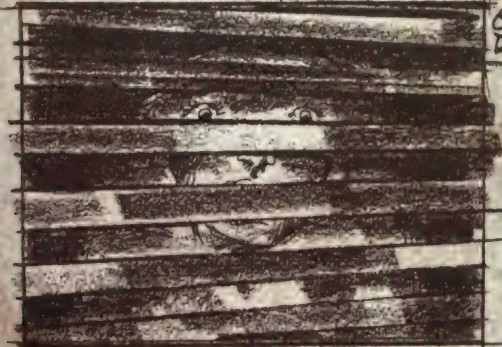


...but in doing so, Kate sees an Apollo candy bar and devours one instantly...

17

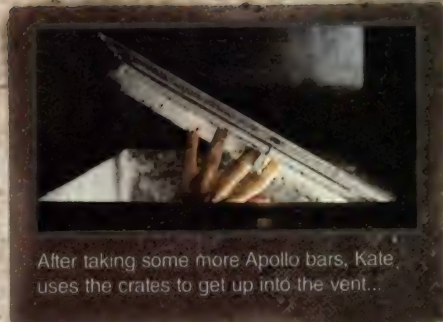
W/ KATE LOOKS DOWN FROM VENT ON

GED
DOME



18

KATE'S POV



After taking some more Apollo bars, Kate uses the crates to get up into the vent...

SC 26-

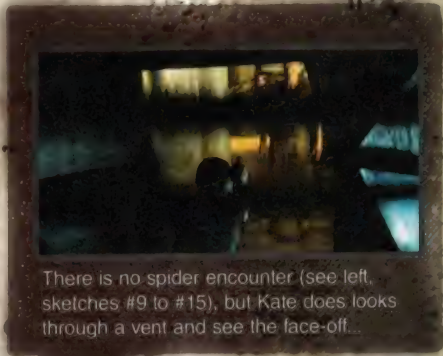
BANG, BANG

19



20

KATE SCRAMBLES FORWARD.



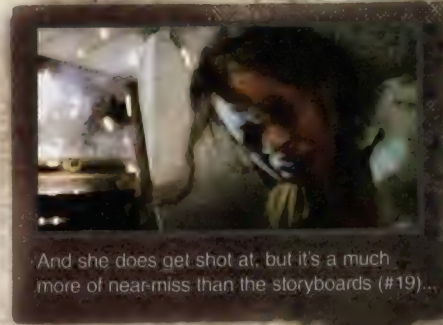
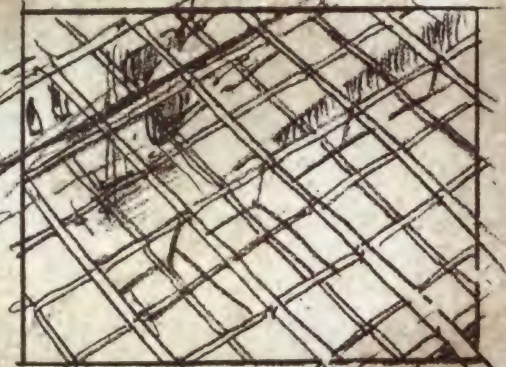
There is no spider encounter (see left sketches #9 to #15), but Kate does look through a vent and see the face-off...

...to an elbow-

21



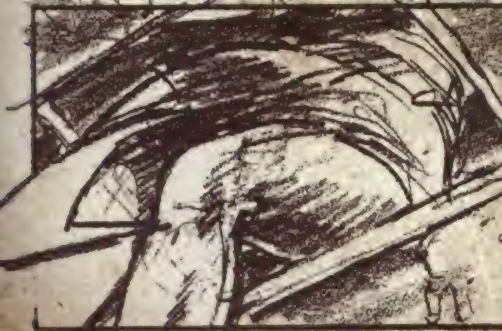
her POV ARMS ROOM 22



And she does get shot at, but it's a much more of near-miss than the storyboards (#19)...

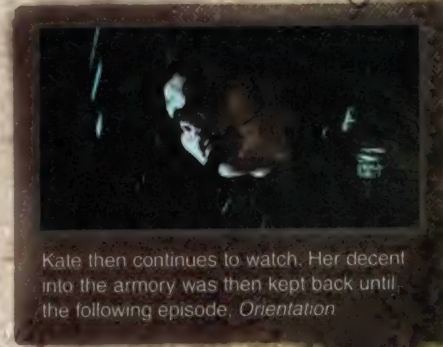
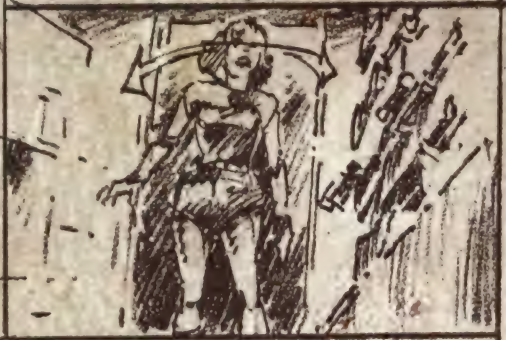
23

SC 27 KATE DROPS INTO RM.



24

KATE SURVEYS ARMS ROOM



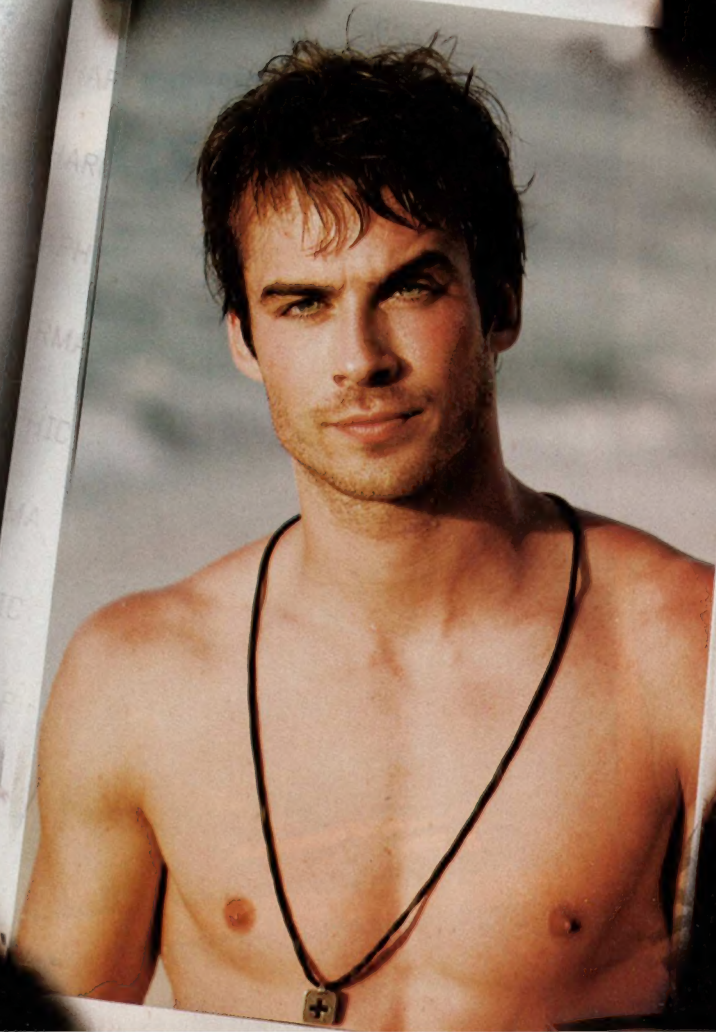
Kate then continues to watch. Her decent into the armory was then kept back until the following episode, *Orientation*

Dear Diary

"I had to literally wait for the blood to go back in my legs so I could walk again"

"HEARTS AND MINDS WAS BRUTALLY PAINFUL. THERE'S NO DOUBT ABOUT IT, BUT WHAT WAS REALLY GREAT WAS THOSE MOMENTS WHERE THE CAMERA IS ROLLING! BECAUSE FOR 60 SECONDS AFTER THAT, BEING TIED UP, WILDLY UNCOMFORTABLE AND ACTUALLY FEELING PAIN, I COULDN'T FEEL MY LEGS BECAUSE MY KNEES WERE ON ROOTS AND STUFF. MY LEGS HAD ESSENTIALLY GONE TO SLEEP [LAUGHS]! WHEN I TRIED TO STAND UP, I'D FALL ON MY FACE. THE ASSISTANT DIRECTOR WOULD COME OVER, PULL ME UP, SIT ME ON A LOG, AND I HAD TO LITERALLY WAIT FOR THE BLOOD TO GO BACK IN MY LEGS SO I COULD WALK AGAIN. IT WAS A REALLY INTERESTING PROCESS AND I DUG IT. WHEN I WAS DONE WITH THAT EPISODE, I THINK I SLEPT FOR THREE DAYS. I HAD BRUISES AND SCRATCHES OVER EVERY SQUARE INCH OF MY BODY AND I WAS SO HAPPY. I WOULD HAVE LOVED TO HAVE DONE ANOTHER ONE LIKE THAT."

(SPECIAL THANKS TO IAN SOMERHALDER, WHO WAS SPEAKING WITH BRYAN CAITNS)





Black Box

Oceanic 815 Flight Recorder

**“HE’S WAIST DEEP IN THE WATER...
FACING US... FACING JACK...
AND IT’S CREEPY...”**

Black Box Recorder brings you the goods: exclusive extracts from the original shooting scripts. For this edition, we examine scenes from season one’s third episode, *White Rabbit*, written by Christian Taylor. Who can Jack see in the distance ...?



Kate doesn't know what to say to that. And that's when it happens --

Jack goes **WHITE**.

KATE
What's...?

But Jack isn't looking at her. He's looking **PAST** her. **WAY** past her. And the **SOUND DROPS OUT** as we follow his gaze to --

THE OCEAN. There. In the shallows. A **MAN**.

And we're **TOO FAR AWAY** to see his face, but he's wearing a **SUIT**. And he's **WAIST DEEP** in the water. Just standing there. Facing us. Facing Jack.

And it's **CREEPY**.



And although Boone continues his rant, his voice begins to fall away. Because Jack isn't looking at Boone anymore...

He's looking over Boone's shoulder. Because there's something there. No -- **SOMEONE**.

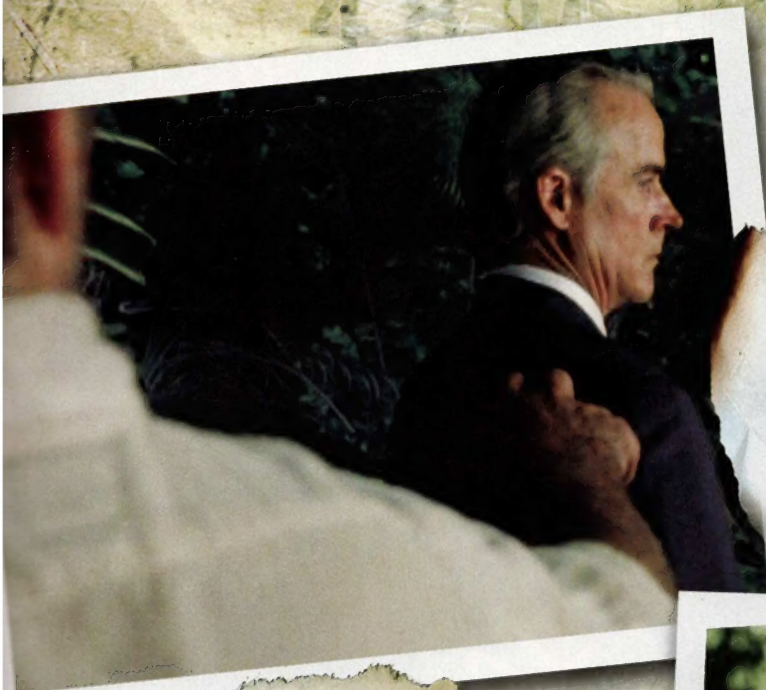
OFF IN THE DISTANCE

There on the **TREE LINE**. Where beach meets jungle.

The MAN IN THE SUIT and he's wearing **WHITE TENNIS SHOES**.

Too far away to discern the figure's identity. Just standing there.





EXT. BEACH - TREE LINE - DAY

BURSTS through the tree line. The sun immediately obscured by the JUNGLE CANOPY. And Jack comes to an ABRUPT STOP because --

The Man In The Suit is ten yards away.

Just standing still. His back to Jack. Close enough to make out his GRAY HAIR. And it's HAND-HELD. CREEPY. Jack takes a few tentative steps forward. Closing the distance...

Jack reaches out to touch his shoulder... And the Man SUDDENLY TURNS!

It's Jack's father.



Nothing there. But then the CRACK OF A TWIG snapping brings his attention back to --

THE SURROUNDING JUNGLE

And Jack can just make out SOMEONE RUNNING THROUGH IT --

The Man in the suit and white tennis shoes. HIS FATHER.

Wait! JACK

And a new look of DETERMINATION falls over Jack's eyes. Enough of this. ENOUGH. He's gonna catch him this time. He has to.

So Jack cuts through the jungle, just catching GLIMPSES of his father up ahead -- always far off, just out of reach.

Jack pushes massive LEAVES aside -- and we're SO CLOSE on him we lose perspective because Jack RUNS with such drive and such purpose -- GAINING now, about to finally CATCH UP when --

THE GROUND GIVES WAY.

JACK FALLS FORWARD down an INCLINE -- FALLS ON HIS ASS -- SCRAMBLING -- SLIDING -- Tries to STOP HIMSELF with his feet but he's moving too fast and...

OH SHIT -- He's flying off A ROCK SHELF and --

A ROOT is all that saves him as his body goes over and his LEGS KICK AT AIR because...

Jack is hanging off the EDGE OF A CLIFF. A hundred foot drop to the ground. Out here. ALONE.



END OF ACT TWO